

LIGHT-TEC
lighting



BROMIC
outdoor heating



MASTERS OF SHADE



 **LouvreTec®**

OPENING & RETRACT ROOFS / SUN LOUVRES / SHUTTERS





INTRO

LIGHTING AND HEATING ADD ONS

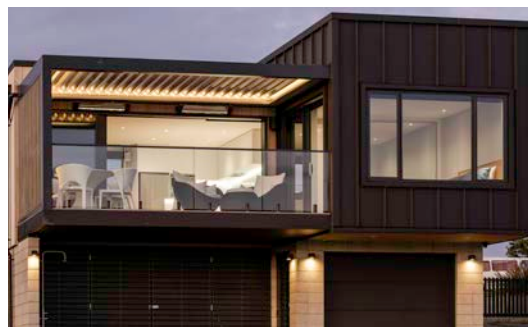
Transform your Louvretec Outdoor Room into a comfortable haven of relaxation, entertainment, and inspiration with Louvretec’s Outdoor Lighting and Heating options.

Illuminate your Opening Roof system and create an atmosphere that perfectly suits your mood with our Louvretec Light-Tec options.

Cozy up your Outdoor Room by adding luxury Bromic Outdoor Heaters. Ultra modern and slimline with great heat coverage, the Bromic range of Outdoor Heaters brings your vision to life.

Louvretec’s Outdoor Lighting and Heating options not only add ambiance and bring additional comfort but also improve the functionality of your Outdoor Room.

Take the first step towards creating your dream outdoor space and explore Louvretec’s Outdoor Lighting and Heating today.



CONTENTS

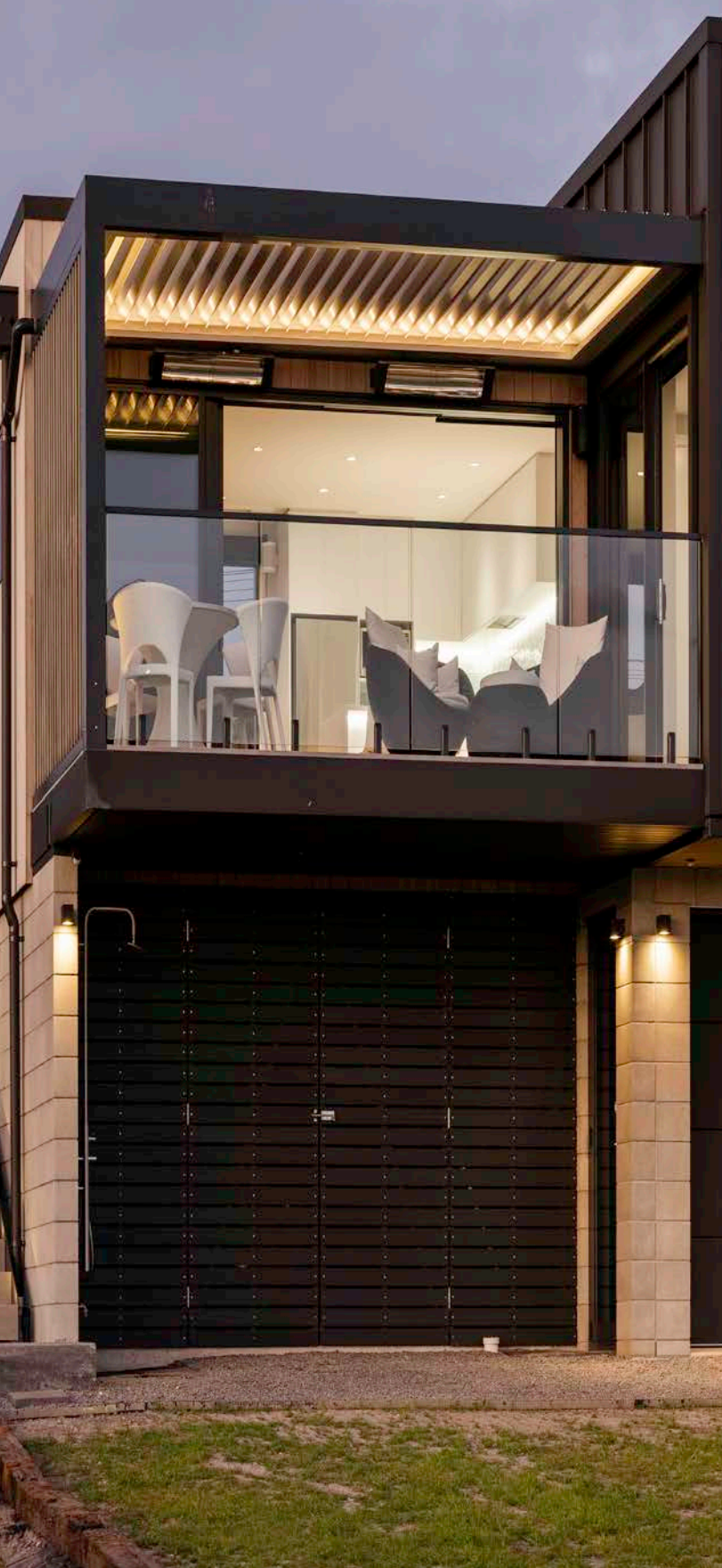
LIGHTING

4	Louvretec Light-Tec Range
6	Lighting Inside Face of the Gutter
8	Lighting Front Face of the Gutter
10	Downlights in Conduit

HEATING

12	Outdoor Heating Range
14	Platinum Smart-Heat Electric
16	Platinum Smart-Heat Electric Marine
18	Eclipse Smart-Heat Electric
20	Bromic Heat Output Range

LOUVRETEC'S CUSTOM RANGE OF PREMIUM OUTDOOR LIGHTING



Louvretec has developed the Light-Tec custom range of premium lighting options, specifically to enhance a Louvretec Room, but equally as well suited for any Louvretec installation.

New technology:

- Light-Tec is environmentally friendly, incorporating the very latest in silicone extrusion technology.
- Dot-free, flexible, ultra-thin, ultra powerful and fully dimmable, the Light-Tec range has been designed to seamlessly blend into the gutter and frame extrusion.

Louvretec proudly brings you the following Light-Tec Lighting options:

1. CONTINUOUS LED PURE FLOW STRIP LIGHTING TO INSIDE FACE OF GUTTER
This popular option shines diffused light onto the underside of the louvre blade.
2. CONTINUOUS LED NEON STRIP LIGHTING TO FRONT FACE OF GUTTER
The ultra slim strip sits flush with the front face of the lighting clip providing seamless, continuous lighting to the inside of the Louvretec Room.
3. UNDERFRAME DOWNLIGHTS
This option allows for lighting across the width of the Opening Roof or Outdoor Room.

All on one controller:

- One controller takes care of all motorisation, lighting and heating.
- Set-up by your Louvretec Dealer, very little instruction is required - simply scroll through the screen display until the graphic showing your desired option appears.
- A simple two-button operation covers all functions.

NOTE: LIGHTING OPTIONS CAN VARY BETWEEN DEALERS AND COUNTRIES. DISCUSS SPECIFIC OPTIONS WITH YOUR LOCAL LOUVRETEC DEALER.



LIGHT-TEC OUTDOOR LIGHTING

Premium Outdoor Lighting options by Louvretec.



ONE CONTROLLER FOR ALL YOUR LOUVRETEC ROOF, LIGHTING AND HEATING REQUIREMENTS

LIGHTING INSIDE FACE OF THE GUTTER

DOT FREE LINEAR FOR PERFECT COLOUR CONSISTENCY

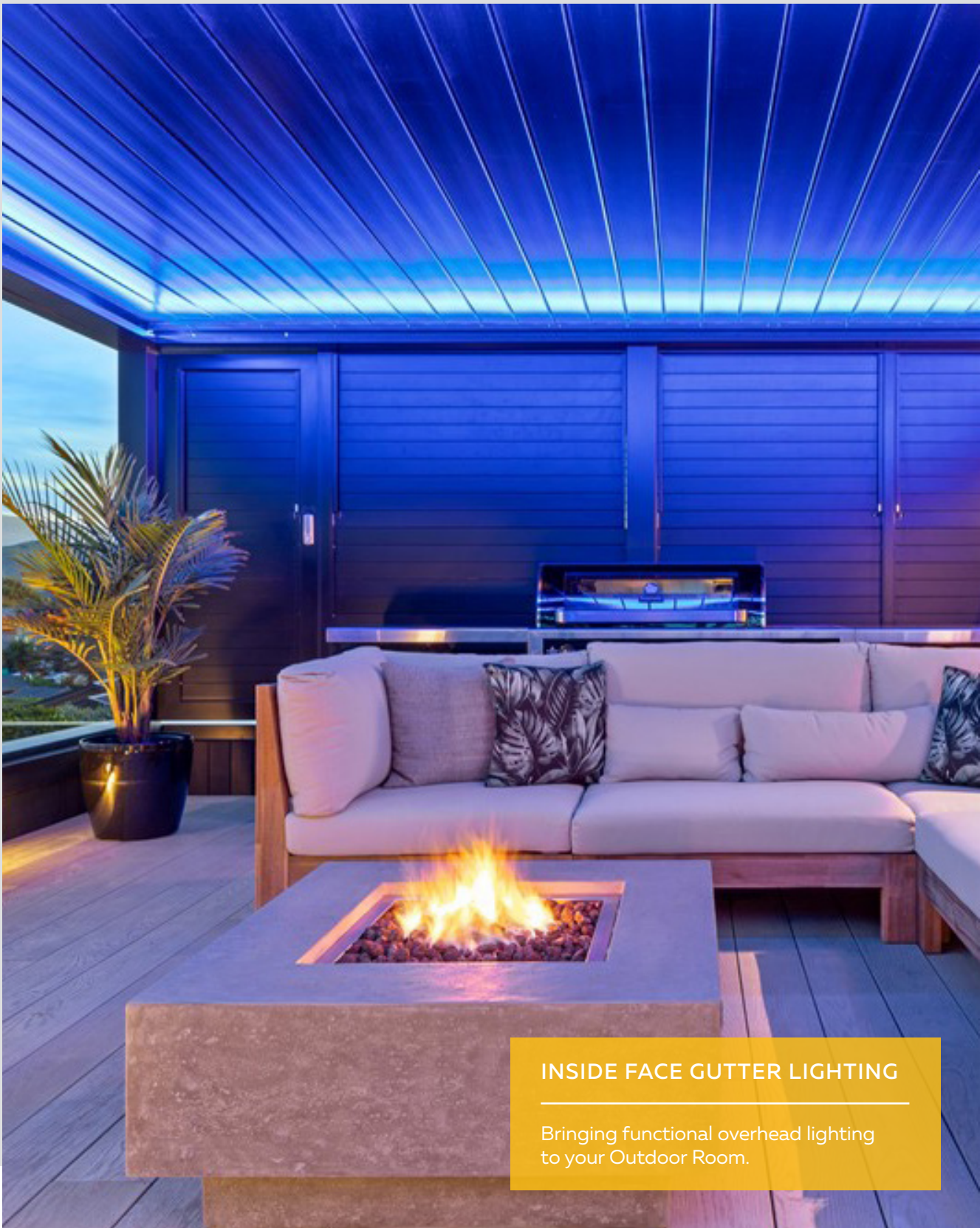


Inside face gutter lighting is our most requested lighting option.

Louvretec's new reversible strip gutter lighting extrusion provides a perfect lighting option to the inside face of the gutter.

The continuous LED Pure Flow strip fits to the top inside face of the gutter, providing a warm diffused light shining directly onto the underside of the Opening Roof blades.

Available in Warm white, fully dimmable.



INSIDE FACE GUTTER LIGHTING

Bringing functional overhead lighting to your Outdoor Room.



INSIDE FACE LIGHT-TEC
GUTTER LIGHTING

LIGHTING FRONT FACE OF THE GUTTER

ULTRA SLIM STRIP FOR SEAMLESS, CONTINUOUS LIGHTING



Continuous LED Neon Strip lighting is now available fixed to the front face of the gutter.

Featuring ultra-slim dot free lighting, incorporating the latest in advanced silicone technology and high weather resistance.

This option provides direct illumination into the Opening Roof or Louvretec Room, with mitre cut corners blending seamlessly.

Available in Warm white, fully dimmable



FRONT FACE OF GUTTER

Create your atmosphere, set your scene with an outward glow.



FRONT FACE LIGHT-TEC
GUTTER LIGHTING

LIGHTING DOWNLIGHTS IN CONDUIT

CREATE A TRANQUIL ATMOSPHERE



These beautiful compact micro downlights fit neatly within our custom two-piece Lighting conduit.

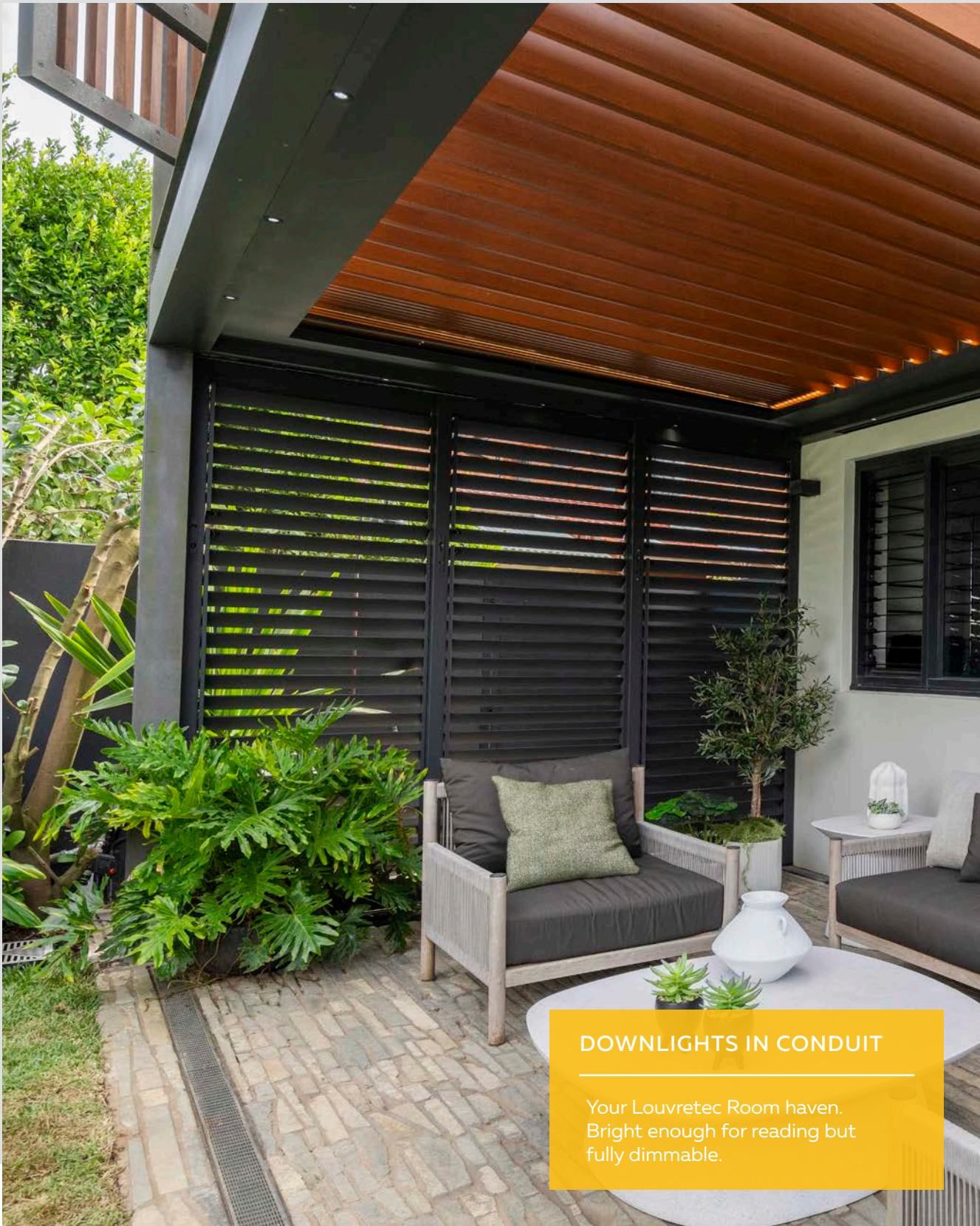
Typically the conduit fits underneath the aluminium Box Section Frame, incorporating the lights "plug and play" wiring, which is hidden but easily accessible.

Bright enough for reading but fully dimmable.

Available in Warm white.

OTHER LIGHTING OPTIONS

Lighting options may vary between Dealerships. Please contact your local Louvretec Dealer.



DOWNLIGHTS IN CONDUIT

Your Louvretec Room haven.
Bright enough for reading but
fully dimmable.



DOWNLIGHTS IN CONDUIT

FRESH WHITE OR BOLD BLACK FOR A MODERN, SLEEK DESIGN



Bromic Outdoor Heaters are known for their exceptional design and performance. Made from premium materials to provide high quality outdoor heating for your Louvretec Outdoor Room. Bromic Outdoor Heaters offer a perfect combination of performance, reliability, and aesthetics.

Bromic Outdoor Heaters are the perfect accompaniment to your Louvretec Outdoor Room and can be incorporated into your Louvretec remote control. Wireless control options are also available.

Louvretec proudly brings you the following Bromic Outdoor Heater options:

The **PLATINUM SMART-HEAT™ ELECTRIC** is designed with a sleek and slimline profile. This award-winning heater is ideal for seamlessly blending into low-clearance and design-focused spaces.

The **PLATINUM SMART-HEAT ELECTRIC MARINE** is built to withstand corrosive environments. This heater features a fully enclosed body to protect internal components and an easy to maintain ceramic-glass surface.

The Platinum Smart-Heat™ Electric outdoor heaters are available in black or white with three power options:

2300W: 840mm x 182mm

3400W: 1275mm x 182mm

4500W: 1351mm x 257mm

Choose from a variety of ceiling, wall, and flush-mounting options.

The **ECLIPSE SMART-HEAT™ ELECTRIC** series not only provides efficient warmth but also illuminates with its built-in LED ring. Choose from five pole designs, including wall-mounted and ceiling-mounted options. Combine this heater with the Bromic Smart-Heat Eclipse dimmer controller and wireless remote to adjust the heat and light coverage.

To discover more about Bromic Heaters please refer to the separate Bromic Outdoor Heater Brochures on our website. Heater options may vary between Louvretec Dealers.



BROMIC OUTDOOR HEATING

The Bromic Outdoor Heater range is sleek and modern for design focused spaces.

PLATINUM SMART-HEAT™ ELECTRIC

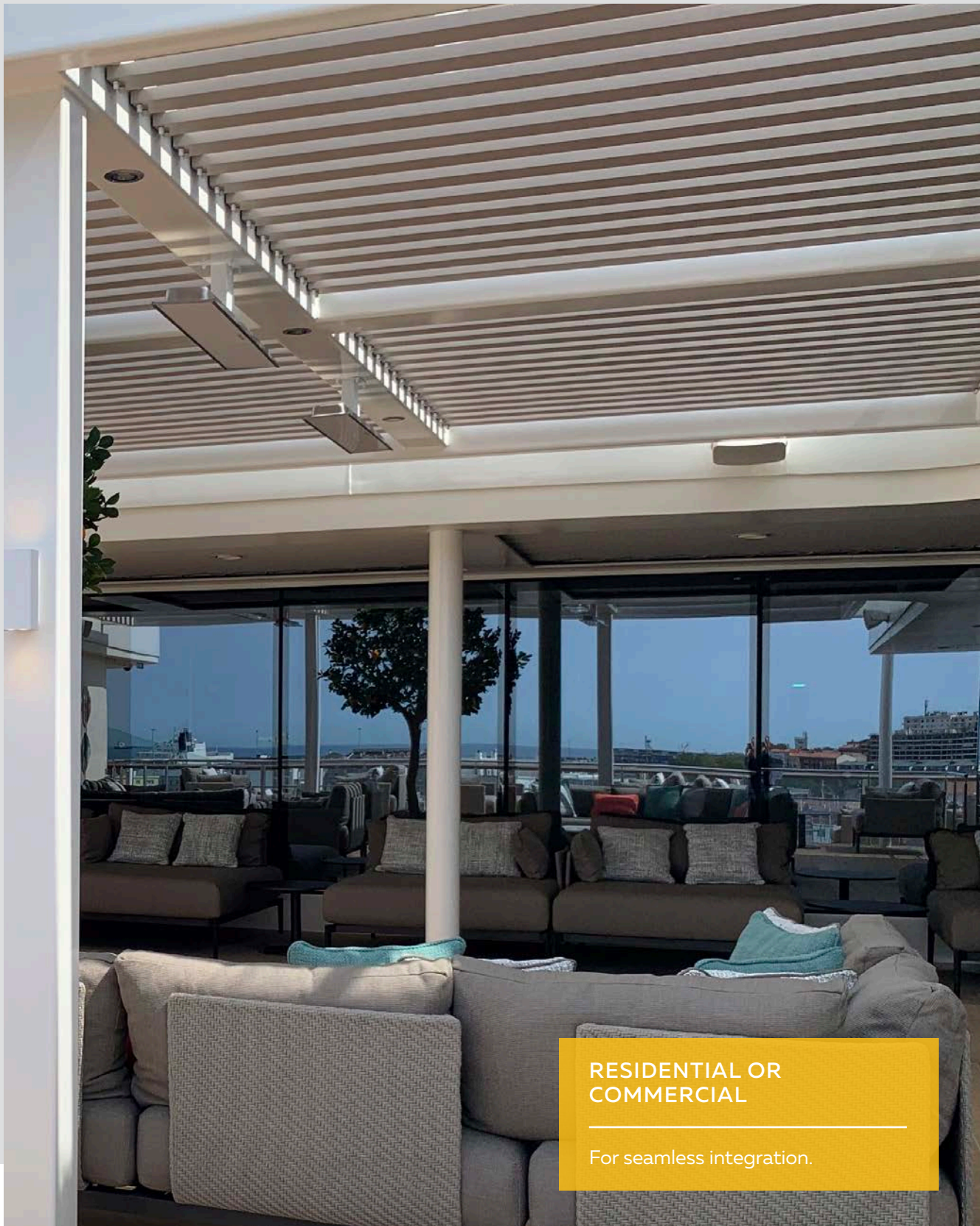
FRESH WHITE OR BOLD BLACK FOR A MODERN, SLEEK DESIGN



The Bromic Smart-Heat Electric series is available in black and white.

Platinum Smart Heat Electric heaters are an ideal option to consider when heating under a Louvretec Opening Roof or full Louvretec Outdoor Room.

These slim-line stainless steel units spread warmth and comfort evenly, and are installed to blend seamlessly into the background.



RESIDENTIAL OR
COMMERCIAL

For seamless integration.



2300W; 3400W AND 4500W
SERIES WHITE



2300W; 3400W AND 4500W
SERIES BLACK

PLATINUM SMART-HEAT™ ELECTRIC MARINE

BUILT TO LAST



The Bromic Smart-Heat Electric Marine is ideal for Coastal properties requiring extra protection from harsh marine environments.

The Platinum Smart-Heat Marine Heater is available in a white or black finish with a variety of mounting options, including wall, ceiling, and recessed.

Why Platinum Marine?

To counteract the hurdles of installing an outdoor heater near the coast where standard stainless steel can “tea-stain” and deteriorate, Bromic engineered the Platinum Electric Marine grade heater series.

AISI 316 Marine-Grade Stainless Steel

Built to withstand corrosive environments with high grade materials and a fully enclosed heater body to protect internal elements.



**PLATINUM SMART-HEAT
ELECTRIC MARINE**

Offering peace of mind that the heater
is built to last in coastal conditions.



2300W; 3400W AND 4500W
SERIES WHITE



2300W; 3400W AND 4500W
SERIES BLACK

ECLIPSE SMART-HEAT™ ELECTRIC

BOLD BLACK FOR A MODERN, SLEEK DESIGN



The Broomic Eclipse Smart-Heat Electric series is ideal for mid-beam mounting. The Eclipse series adds style, warmth and light to your Louvretec Outdoor Space.

Dim the lights and turn up the heat with the new Eclipse Smart-Heat Electric heater.

This dual-functioning heater provides warmth and also light with its built-in dimmable, LED light ring.

Available in Black.



**ECLIPSE SMART-HEAT
ELECTRIC**

Sleek and modern for design
focused spaces.



3000W SERIES BLACK

HEATING OUTDOOR SPACES EFFECTIVELY WITH RADIANT HEAT



Choose which heater for your application.

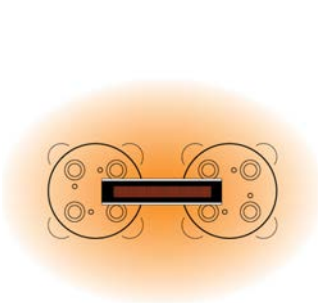
Note: An outdoor area is defined as being at least 30% open (front, back, wall or sides).

If these areas under an Opening Roof are closed in with Shutters, Outdoor Blinds or Slidetec Frameless Sliding Glass Panels, then more heat will be captured, creating a convectional heating affect.

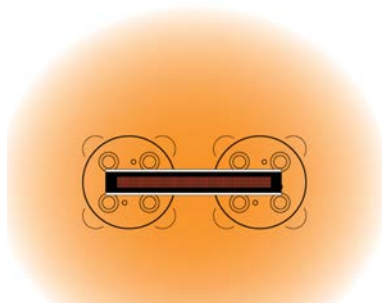
PLATINUM AND PLATINUM
SMART-HEAT ELECTRIC MARINE
2300W Series
Heating approximately 6m²

PLATINUM AND PLATINUM
SMART-HEAT ELECTRIC MARINE
3400W Series
Heating approximately 10m²

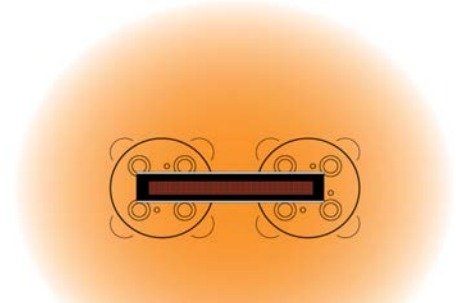
PLATINUM AND PLATINUM
SMART-HEAT ELECTRIC MARINE
4500W Series
Heating approximately 13m²



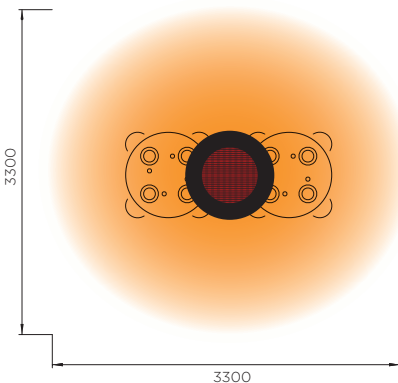
2300W Dimensions:



3400W Dimensions:



4500W Dimensions:



ECLIPSE SMART-HEAT
3000W Series
Heating approximately 11m²
3000W Heating Power





GLOW UP

Louvretec Outdoor Lighting illuminating this special space, where afternoons transition long into the evening.



NEW ZEALAND

EMAIL info@louvretec.co.nz

VISIT www.louvretec.co.nz

AUSTRALIA

EMAIL info@louvretec.com.au

VISIT www.louvretec.com.au

FOR MORE INFORMATION VISIT

www.louvretec.com



 **LouvreTec®**

OPENING & RETRACT ROOFS / SUN LOUVRES / SHUTTERS