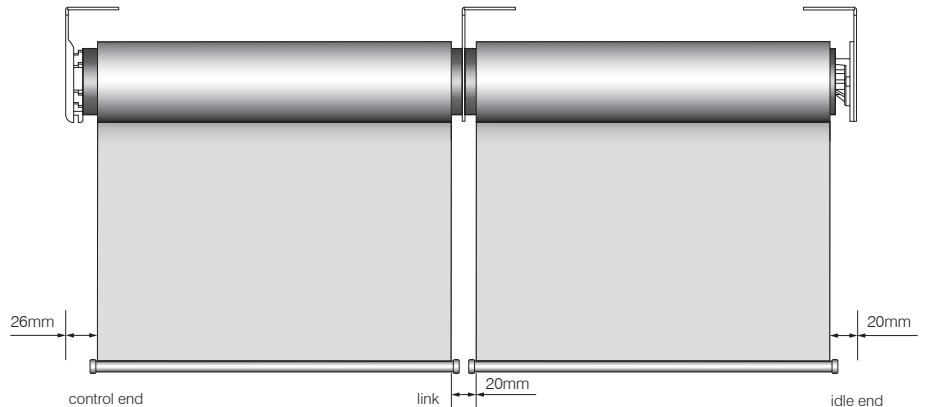


SYSTEM SPECIFICATIONS

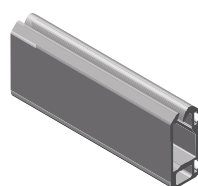
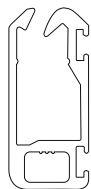
| | |
|--|---|
| Minimum width | 800mm |
| Maximum width | 3200mm |
| Maximum drop | 3600mm |
| Linkable | Yes, up to 5 blinds, depending on size |
| Dual brackets | Yes |
| Minimum recess dimensions: (for single blinds) | Width 135mm / Height 120mm |
| Light gaps: (see diagram) | Control side 26mm Idle end side 20mm Between linked blinds 20mm |

Light gaps



TECHNICAL INFORMATION: BASEBARS

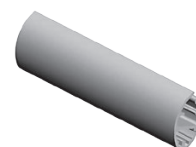
| | |
|------------------|---|
| Size | The Force – Silent 31x13mm, Premium 33x13mm Oval 26x15mm, Round 22mm |
| Standard colours | Anodised, White, Shoji White, Barrister White, Barley, Dune, Black |
| Options | Custom powder coating available |



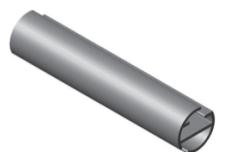
The Force – Silent
31x13mm



Premium
33x13mm



Oval
26x15mm



Round
22mm



HMSS 60

INTERNAL MOTORISED ROLLER BLINDS



The Helioscreen internal motorised smart system **HMSS 60**, is a heavy duty roller blind that is ideal for medium to large windows in both domestic and commercial applications. Using best quality componentry this system is built to last, offering many years of trouble free shading at the touch of a button.

Easily integrated into home automation systems, or controlled via hand held remote or smart phone / tablet App, this system provides control options for any modern interior.

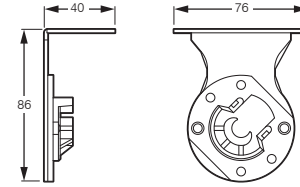
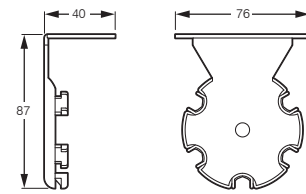
TECHNICAL INFORMATION: BRACKETS

| | |
|------------------|---|
| Size | 76 x 40mm fixing plate 87mm projection |
| Standard colours | White, Black Custom powder coating available |
| Details | Dual blind brackets available |

TECHNICAL INFORMATION: ROLLER TUBE

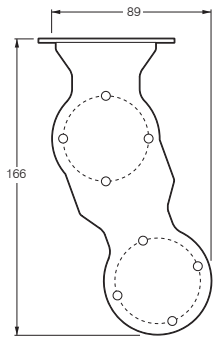
| | |
|-------------|---|
| Roller tube | 60mm extruded aluminium 1.94mm wall thickness |
| Control | Motor by Somfy – remote controlled, wall switch or through a building management system Multitude of single and multi-channel remotes available, as well as automatic timers and sensors |
| Idler | Nylon with stainless steel pin |

Single brackets

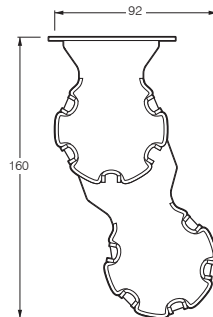


Mounting brackets

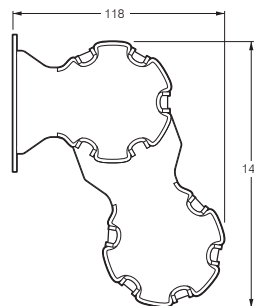
Dual brackets



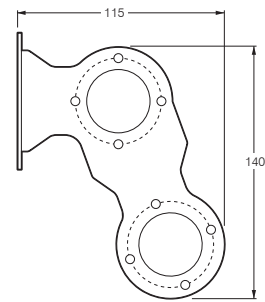
Top fix dual bracket



Top fix dual bracket



Face fix dual bracket



Face fix dual bracket