

# sergé

sergé



## sergé



roller

Composition: 42% Glass / 58% PVC

Width: 3200mm

Weight: 525gsm

Openness: 3%

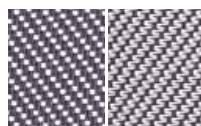
Thickness: 0.83mm

Colour Fastness: 7-8

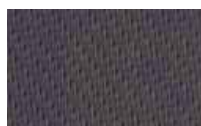
Fire Rating: M1 NF P92-503

Solar Optical Properties: Below

## complete colour palette



grey white  
(front/back)



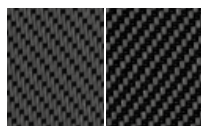
grey



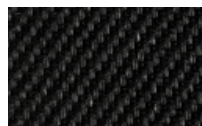
linen white  
(front/back)



black linen  
(front/back)



grey black  
(front/back)



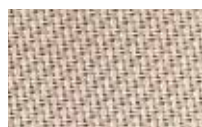
black



bronze



pearl



linen



black bronze  
(front/back)



grey 1%



grey black 1%  
front/back



black grey 1%  
(front/back)



black 1%

	Ts	Rs	As	Tv	Tuv
Grey White (Front)	4.4	27.2	68.4	4.4	3.0
Grey White (Back)	4.4	38.9	56.7	4.4	3.0
Grey	5.1	14.2	80.7	4.9	4.8
Linen White (Front)	15.2	56.8	28.0	13.5	4.2
Linen White (Back)	15.2	58.9	25.9	13.5	4.2
Black Linen (Front)	5.6	16.1	78.3	5.3	4.0
Black Linen (Back)	5.6	26.0	68.4	5.3	4.0
Grey Black (Front)	3.7	12.7	83.6	3.7	3.6
Grey Black (Back)	3.7	9.6	86.7	3.7	3.6
Black	2.6	5.2	92.2	2.6	2.6
Bronze	4.8	9.1	86.1	4.7	4.8
Pearl	7.7	39.7	52.6	6	3.8
Linen	13.4	53.2	33.4	11	4.2
Black Bronze (Front)	6.0	5.8	88.2	5.8	5.8
Black Bronze (Back)	6.0	6.2	87.9	5.8	5.8
Grey 1%	4.8	21.6	73.6	2.2	0.9
Grey Black 1% (Front)	2.9	16.0	81.1	1.5	0.6
Grey Black 1% (Back)	2.9	16.0	81.1	1.5	0.6
Black Grey 1% (Front)	0.8	10.2	89.0	0.6	0.5
Black Grey 1% (Back)	0.8	10.1	89.1	0.6	0.5
Black 1%	0.4	6.69	92.9	0.3	0.3

Ts - Solar Transmittance  
Rs - Solar Reflectance  
As - Solar Absorbance  
Tv - Visual Transmittance  
Tuv - UV Transmittance

N.B. - Colours may vary from the digital representation.