

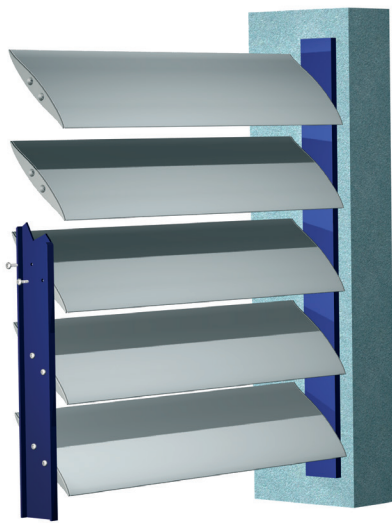


END FIXED SUN LOUVRES

FIX BLADES VERTICALLY OR HORIZONTALLY

All Louvretec sun louvres can be end fixed & all have internal screw fixing ports which allows the blades to be end fixed, set at any pitch and any centre.

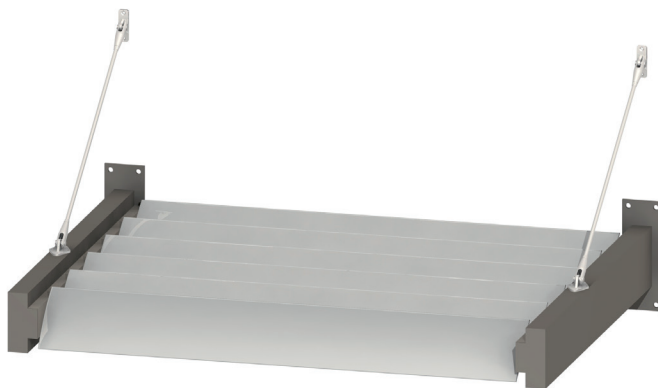
As a rule of thumb blade centres are generally fixed at between 75% - 100% of the blade width.



VERTICAL PANEL END FIXED

VERTICAL PANELS END FIXED

- All Louvretec sun louvres have internal screw fixing ports. This enables the blades to be;
 - set at any angle or pitch (blade pitch)
 - set at any centre (blade centre)
- As a rule of thumb, blade centres are fixed at between 75% - 100% of their width.
eg: 180mm Airfoil would have a centre between 135mm - 180mm.
- Blade pitch is an equally important consideration in determining the degree of light, shade, privacy and shelter.



OVERHEAD PANEL END FIXED

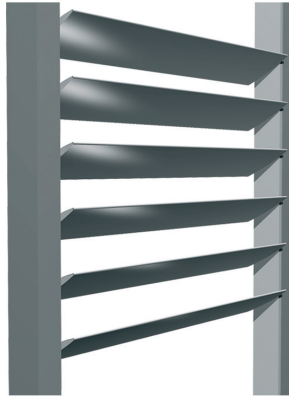
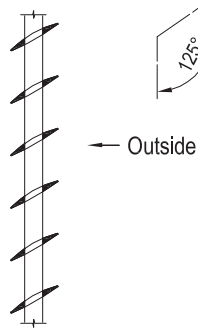
OVERHEAD PANELS END FIXED

- Horizontal or overhead louvres may fit within an existing opening or as illustrated may require a separate structural sub-frame.
- Sub-frames are typically aluminium or steel and usually require specific engineering details.
- Louvretec specialises in the supply and installation of aluminium structural sub-frames.
- Please contact Louvretec for further details.

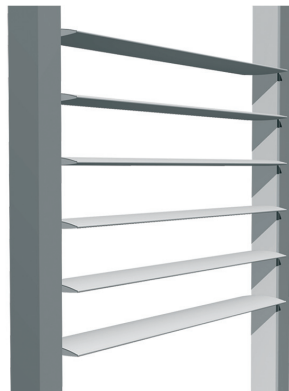
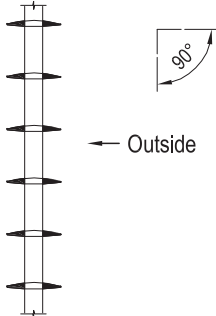
TYPICAL DETAIL : END FIXED SUN LOUVRES - HOW THE SYSTEM WORKS: VERTICAL PANELS

BLADES CAN BE SET TO ANY PITCH OR CENTRE. THREE TYPICAL OPTIONS SHOWN:

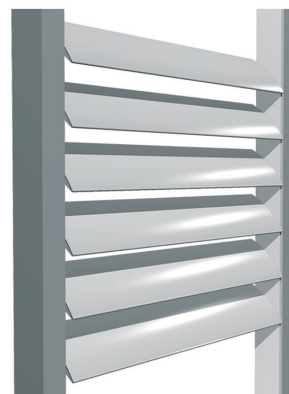
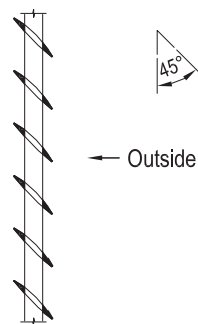
Blade Pitch Up



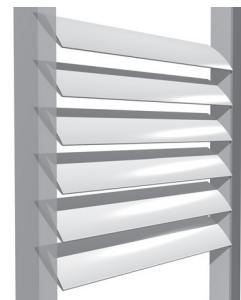
Central



Blade Pitch Down

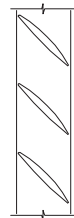


- All Louvretec sun louvres have internal screw fixing ports. This enables the blades to be;
 - set at any angle or pitch (blade pitch)
 - set at any centre (blade centre)
- As a rule of thumb, blade centres are fixed at between 75% - 100% of their width. eg: 180mm Airfoil would have a centre between 135mm - 180mm.
- Blade pitch is an equally important consideration in determining the degree of light, shade, privacy and shelter:



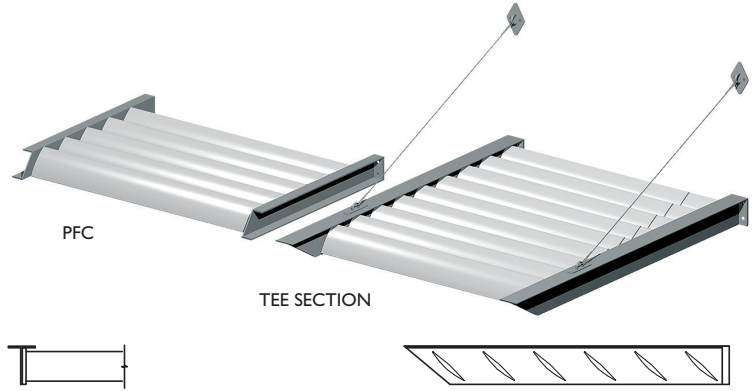
Louvre blades in relation to frame

- (1) Louvres fit outside of frame, End Caps Required (2) Louvres fit within frame, No End Caps Required

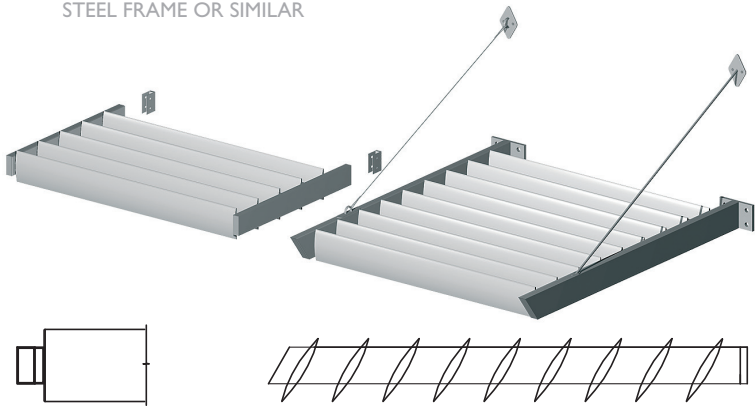


TYPICAL DETAIL : END FIXED SUN LOUVRES - HOW THE SYSTEM WORKS: OVERHEAD PANELS

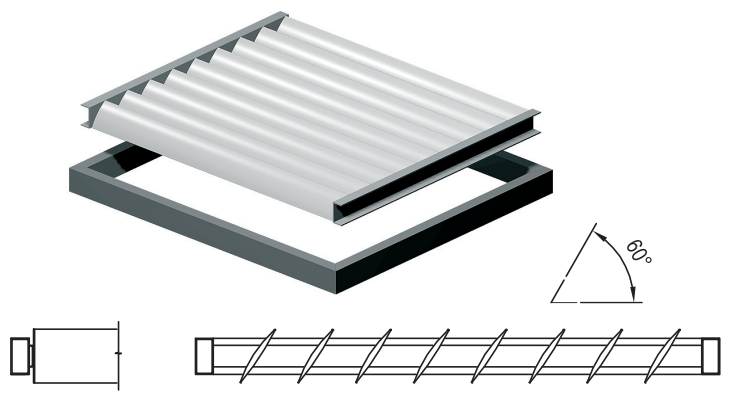
END FIXED TO FLAT ALUMINIUM ONTO "T" SECTION OR PFC (FLAT SIDE OF "T" UP OR DOWN)



END FIXED TO CHANNEL ON EXISTING STEEL FRAME OR SIMILAR



END FIXED TO CHANNEL ONTO BOX SECTION



- Horizontal or overhead louvres may fit within an existing opening or as illustrated may require a separate structural sub-frame.
- Sub-frames are typically aluminium or steel and usually require specific engineering details.
- Engineering is usually also required for the fixing details to the building.
- Louvretec specialises in the supply and installation of aluminium structural sub-frames.



- All louvre panels shown can be joined to create one continuous panel.

