



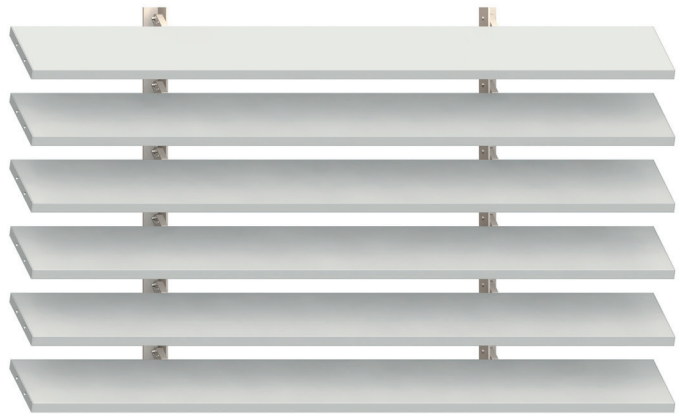
## BRACKET FIXED SUN LOUVRES

### BRACKET FIX BLADES VERTICALLY OR HORIZONTALLY

All Louvretec sun louvres can be bracket fixed using Louvretec's proprietary bracket fixing systems. Die cast or extruded brackets are custom manufactured site specific, enabling the louvre blades to be set at any pitch or to any centres.

#### VERTICAL PANELS BRACKET FIXED

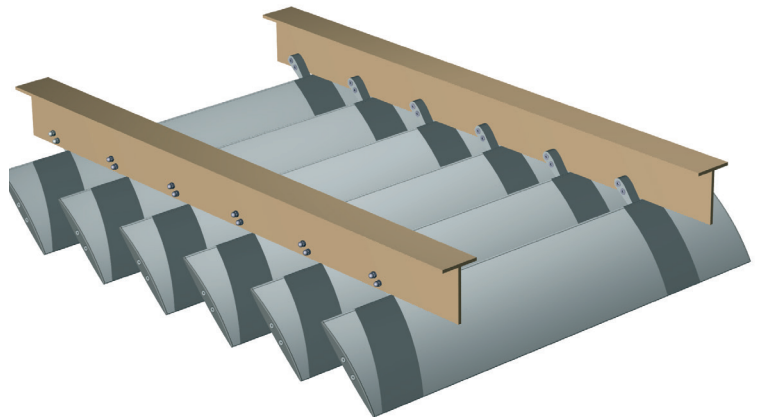
- All Louvretec Airfoil and Maxi Louvres can be bracket fixed, with the blades:
  - set at any angle
  - set at any centre (blade centre)



VERTICAL PANEL BRACKET FIXED

#### OVERHEAD PANELS BRACKET FIXED

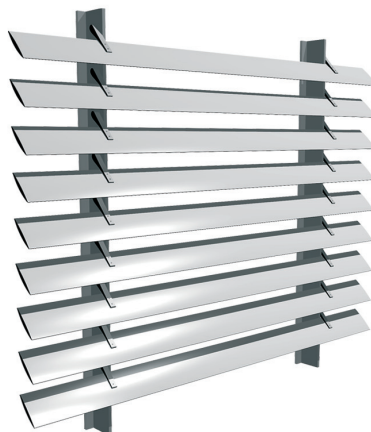
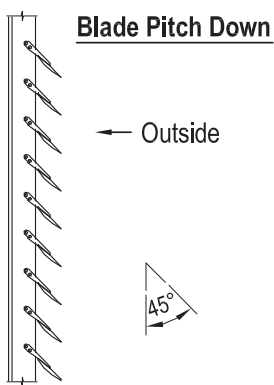
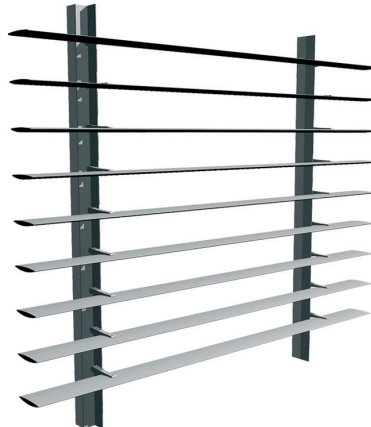
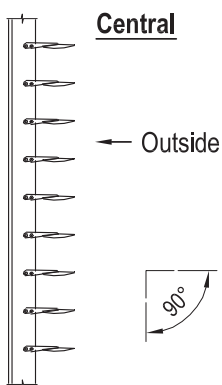
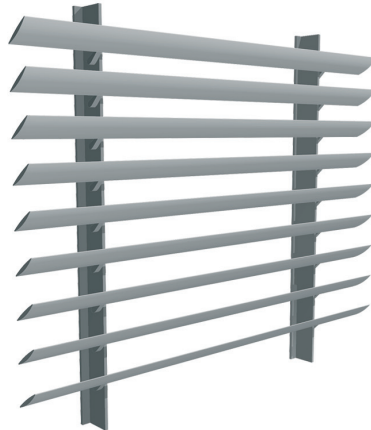
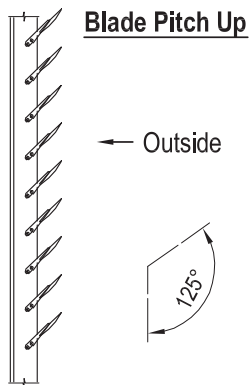
- Horizontal or overhead louvres may fit above an existing opening, or as illustrated may require a specific structural sub frame.
- Sub frames are typically aluminium or steel and usually require specific engineering details.
- Louvretec specialises in the supply and installation of aluminium structural sub frames. Please contact Louvretec for further details.



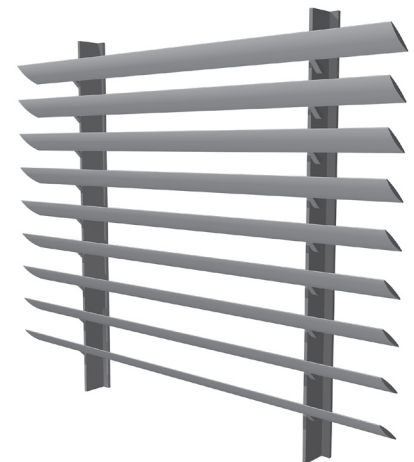
OVERHEAD PANEL BRACKET FIXED

## // HOW THE VERTICAL SYSTEM WORKS

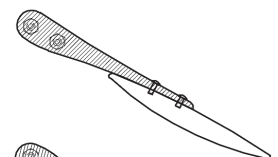
Blades can be set to any pitch or centres. Three typical options shown:



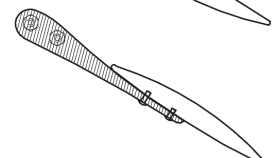
- All Louvretec Airfoil and Maxi Louvres can be bracket fixed with the blades:
  - set at any angle or pitch (blade pitch)
  - set at any centre (blade centre)
- There are four combinations of louvre blade to extruded bracket arm (tear drop) to consider:



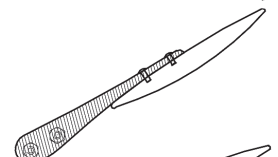
1. Blade pitch down  
tear drop over



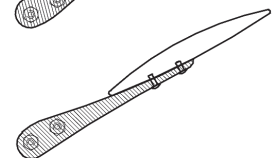
2. Blade pitch down  
tear drop under



3. Blade pitch up  
tear drop over

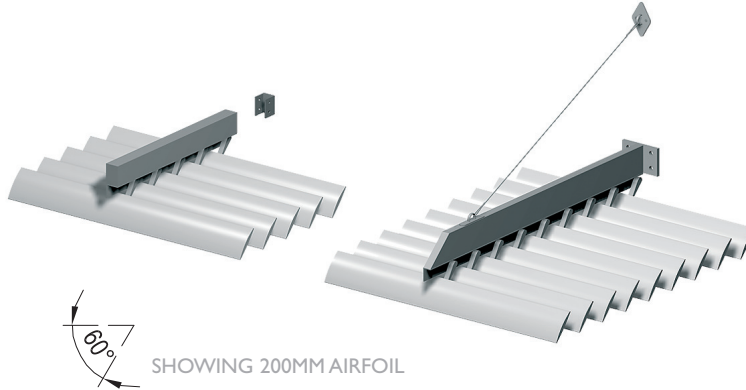


4. Blade pitch up  
tear drop under



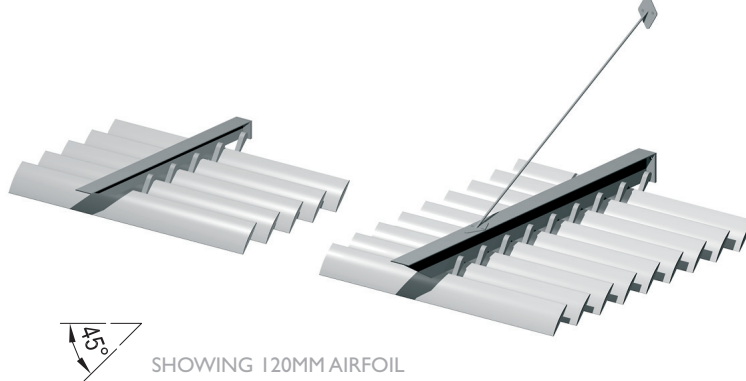
## TYPICAL DETAIL : BRACKET FIXED SUN LOUVRES - HOW THE SYSTEM WORKS: OVERHEAD PANELS

BLADE PITCH DOWN TEAR DROP UNDER

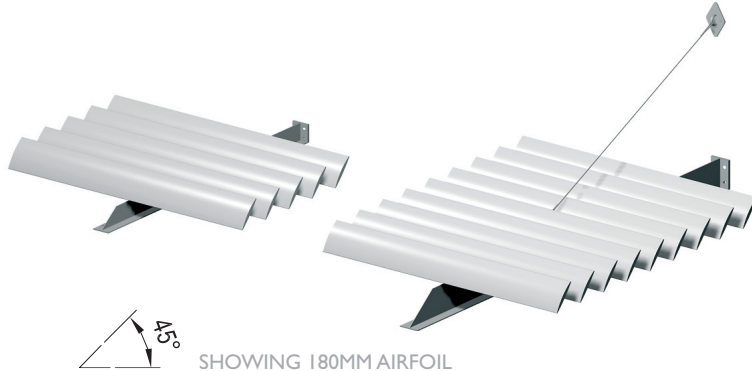


- Horizontal or overhead louvres may fit above an existing opening or, as illustrated, may require a separate structural sub-frame.
- Sub-frames are typically aluminium or steel and usually require specific engineering details.
- Engineering is usually also required for the fixing details to the building.
- Louvretec specialises in the supply and installation of aluminium structural sub-frames.

BLADE PITCH DOWN TEAR DROP UNDER

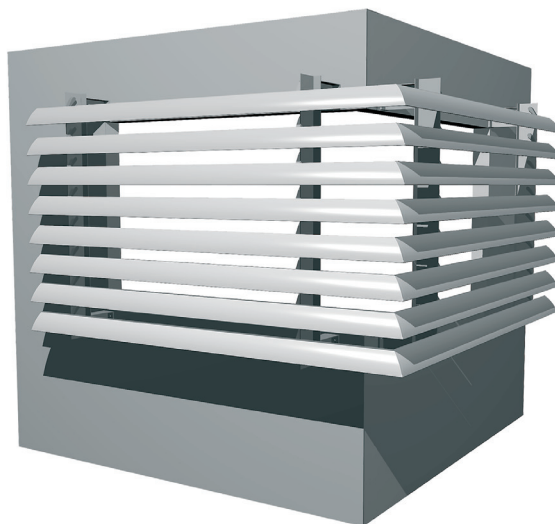


BLADE PITCH DOWN TEAR DROP UNDER

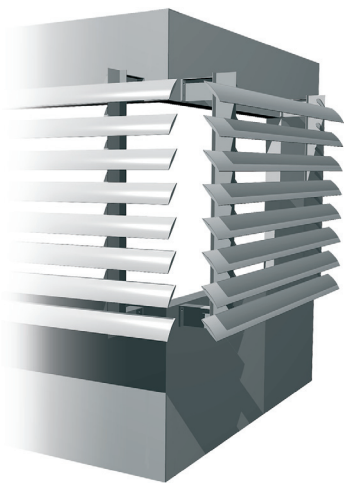


- Bracket fixed louvres mitred at the corners are a Louvretec specialty.
- A seamless effect is achieved giving the blades continuity to both sides of the building.
- Both vertical and horizontal bracket fixed louvres can be mitred.

### VERTICAL BRACKET FIXED LOUVRES WITH CORNER MITRES



### CANTILEVERED ENDS



AN ALTERNATIVE TO CORNER MITRES IS TO SQUARE CUT AND CANTILEVER THE BLADES AT THE CORNERS

### HORIZONTAL (OVERHEAD) BRACKET FIXED LOUVRES WITH CORNER MITRES

