

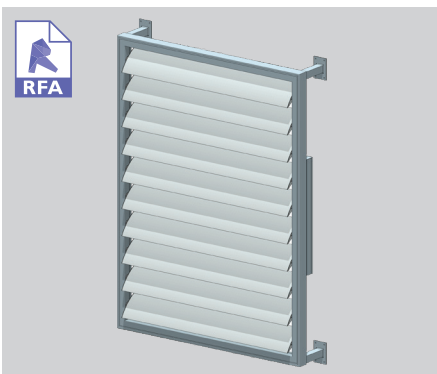
200MM MAXI LOUVRE

most specified maxi louvre

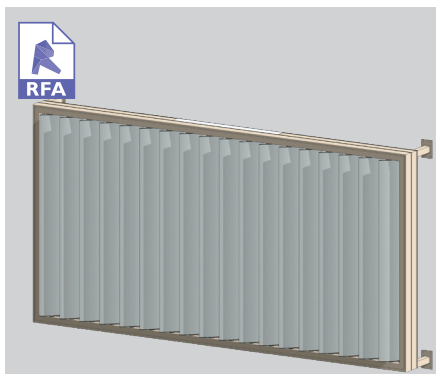
The 200mm Maxi louvre is the smallest in the Maxi Louvre range. It is also one of Louvretec's most specified louvres.

Popular for both commercial and residential use it is available in motorised or hand operable Spiral Pivot, end or bracket fixed, horizontal or overhead panels.

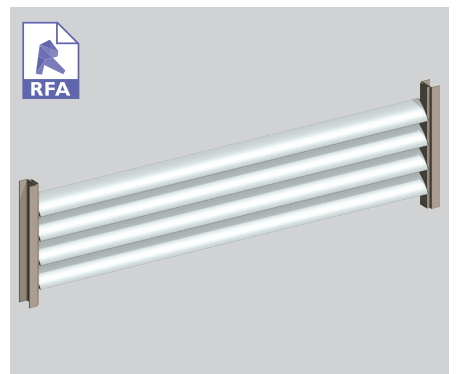
Ideal for shade, shelter, adjustable privacy - the wide spanning capabilities and elegant lines cover a wide range of installation options.



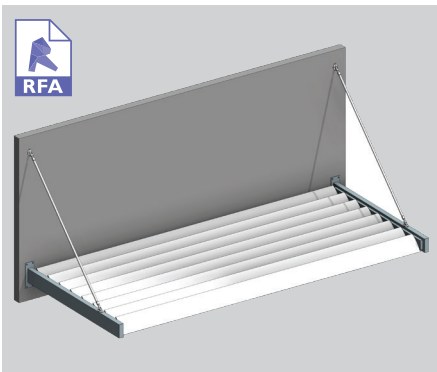
ELAM STREET STRUCTURAL FRAME FRAME - HORIZONTAL



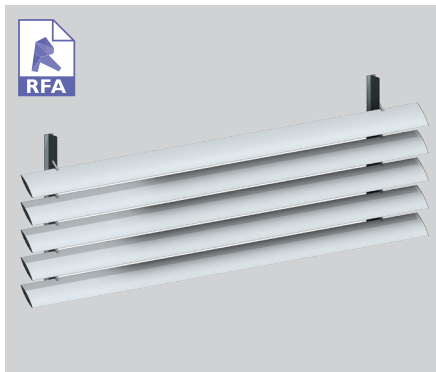
SUPER ELAM STREET STRUCTURAL FRAME WITH SUB-FRAME



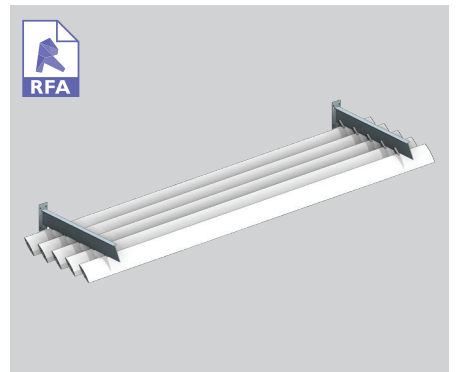
END FIXED - VERTICAL PANELS



END FIXED - OVERHEAD PANEL



BRACKET FIXED - VERTICAL PANEL



BRACKET FIXED - OVERHEAD PANEL

SURFACE COATINGS

A wide range of options are available.



ANODISED



WOOD FINISH



POWDERCOATED

OPERATING THIS SUN LOUVRE SYSTEM - THE CHOICE IS YOURS

Fixed options

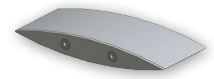
Operable systems



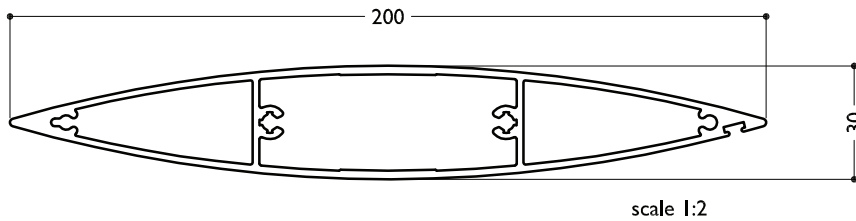
LOUVRETEC GEARBOX



MOTORS AND SENSORS



TECHNICAL DETAILS 200MM MAXI LOUVRE



BLADE SPECIFICATIONS			
Blade cover - opening system	188 mm	Weight per lineal metre	2.75 kg/lm
Weight per square metre - opening system	14.63 kg/sqm	Actual blade width	200 mm
Blade centres - opening system	188 mm		

SPANS AT A GLANCE NB Refer Engineering Section. Climate, terrain, shielding, location, type of structure contribute to determine spans.

WIND ZONE	INSIDE	LOW	MEDIUM	HIGH	VERY HIGH	EXTRA HIGH
Factored wind speed at building	Self wt	32 m/s 115 km/hr	37 m/s 133 km/hr	44 m/s 158 km/hr	50 m/s 179 km/hr	55 m/s 198 km/hr
Ultimate limit state loads (kPa)		+0.92 & -1.15	+1.23 & -1.53	+1.74 & -2.17	+2.24 & -2.80	+2.71 & -3.39
Adjustable and Fixed - horizontal & vertical	3700	3700	3550	2950	2600	2350

INSTALLATION OPTIONS



SPIRAL PIVOT SYSTEM: CALCULATE OPTIMUM FRAME OPENING SIZES

Width: Check engineering limits
Height: Calculation example showing 17 blades

STEP 1

16 blades x 188 centres	3008
1 blade at 200mm	200
17 blades	=3208

STEP 2

Blade cover	3208
+ top and bottom closing angles allow for	
5mm + 5mm	10
Total exact opening height	=3218*

*This is inside measure - not outer frame size



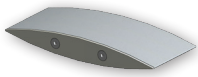
END FIXED

Louvres at any pitch
Louvres at any centre



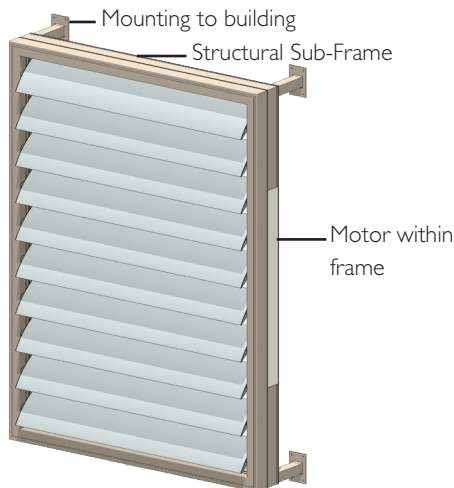
BRACKET FIXED

Louvres at any pitch
Louvres at any centre

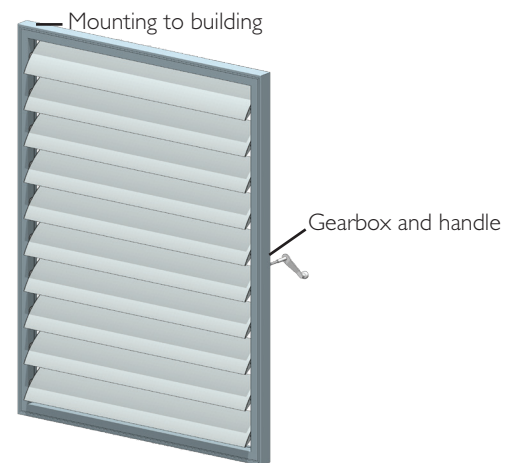


TECHNICAL DETAILS 200MM MAXI LOUVRE SPIRAL PIVOT

TYPICAL DETAIL 3D MODELS 200MM MAXI LOUVRES SPIRAL PIVOT MOTORISED + HAND OPERABLE

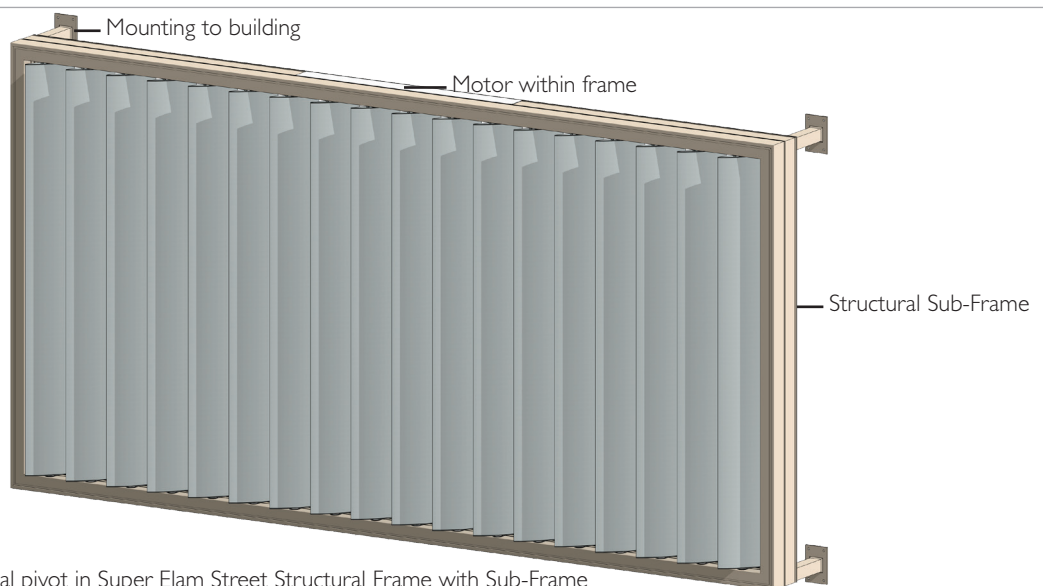


Super Elam Street Structural Frame with Sub-Frame
Vertical panel - Motorised horizontal blades



Elam Street Structural Frame
Vertical panel - Hand operable horizontal blades

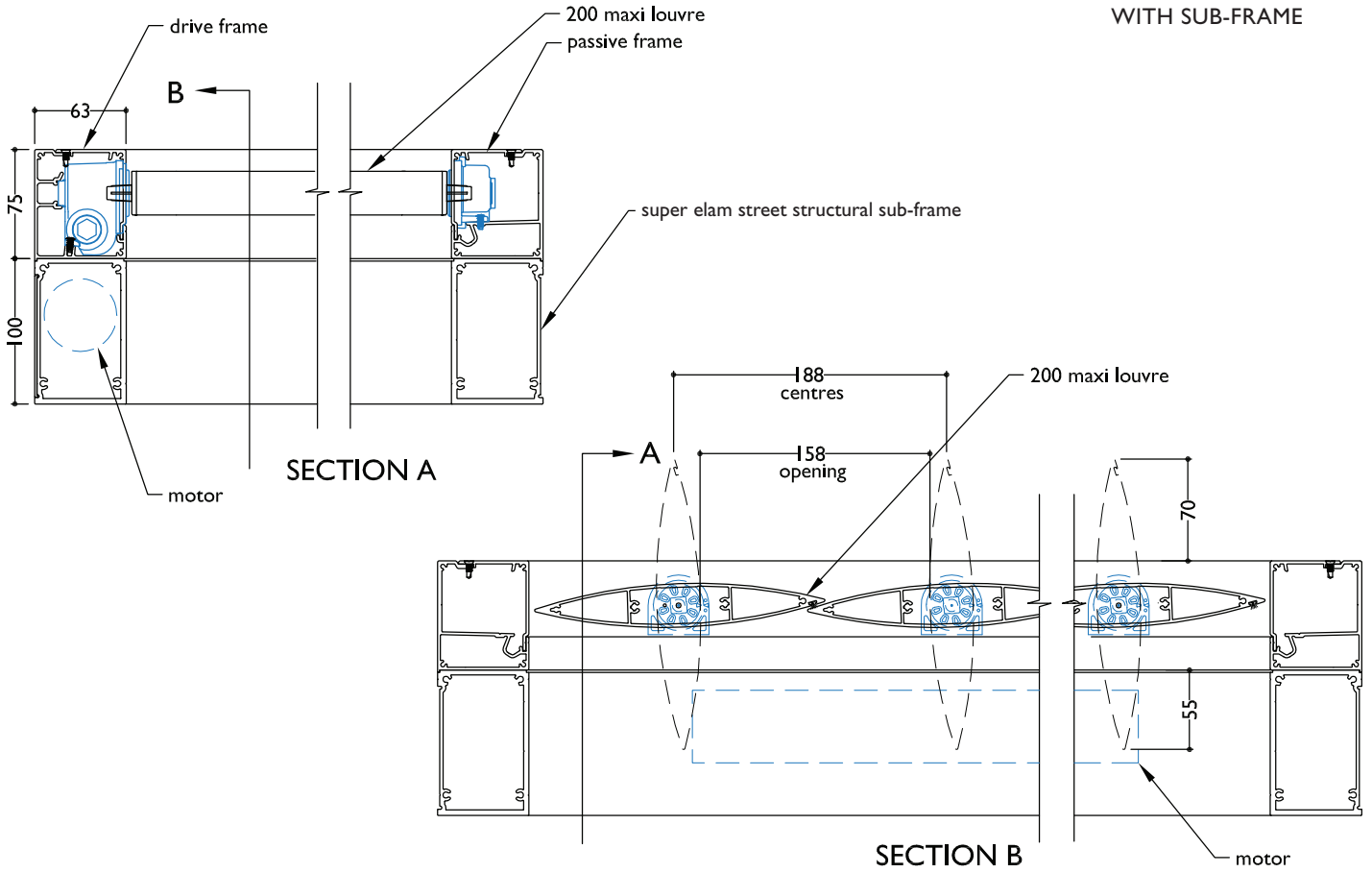
TYPICAL DETAIL 3D MODEL 200MM MAXI LOUVRE SPIRAL PIVOT MOTORISED



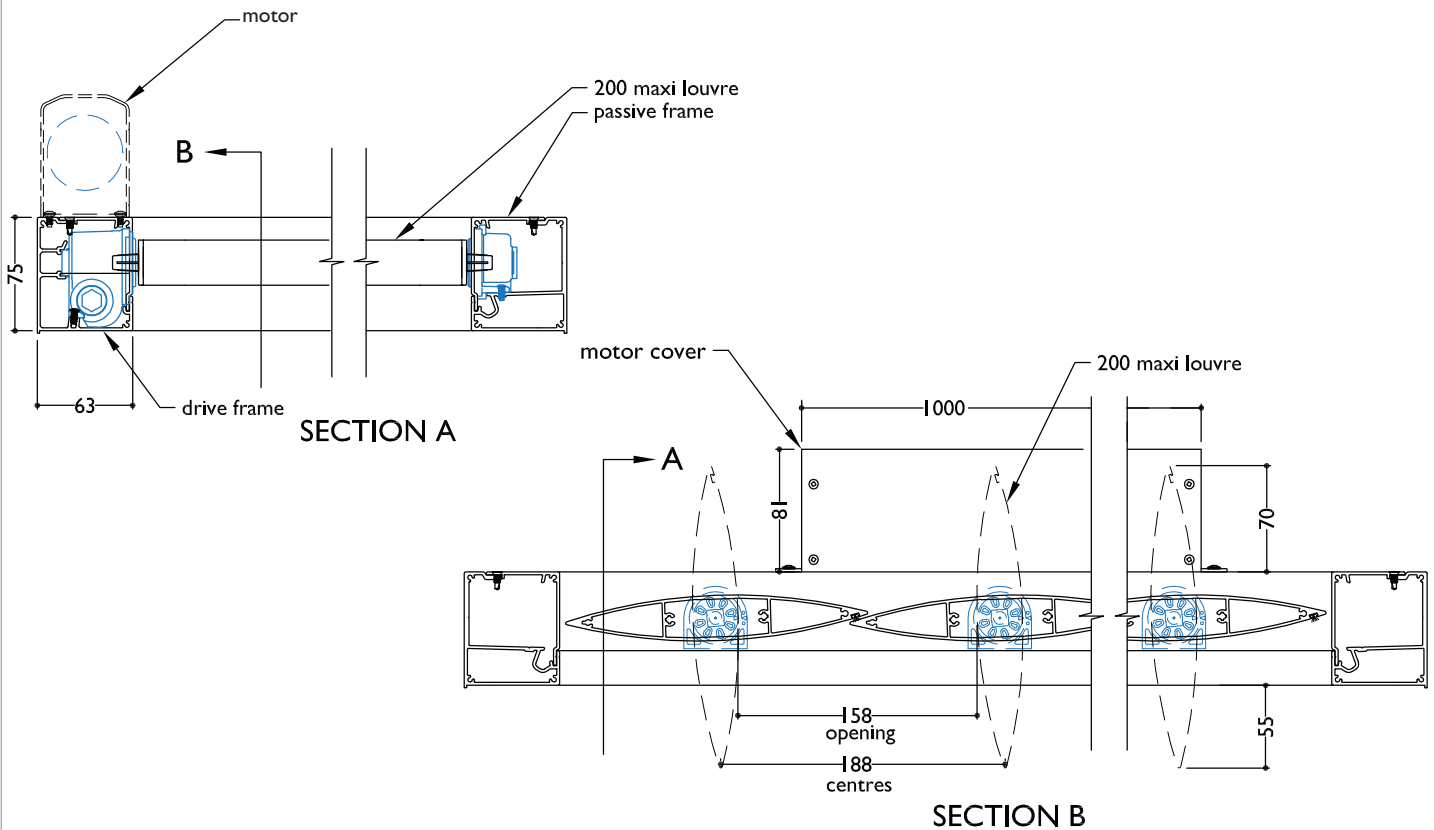
200mm Maxi Louvre Spiral pivot in Super Elam Street Structural Frame with Sub-Frame
Vertical panel - Motorised vertical blades

TYPICAL DETAIL : MOTORISED 200MM MAXI LOUVRE SPIRAL PIVOT

SECTION - MOTORISED 200MM MAXI LOUVRE SPIRAL PIVOT ON SUPER ELAM STREET STRUCTURAL FRAME WITH SUB-FRAME

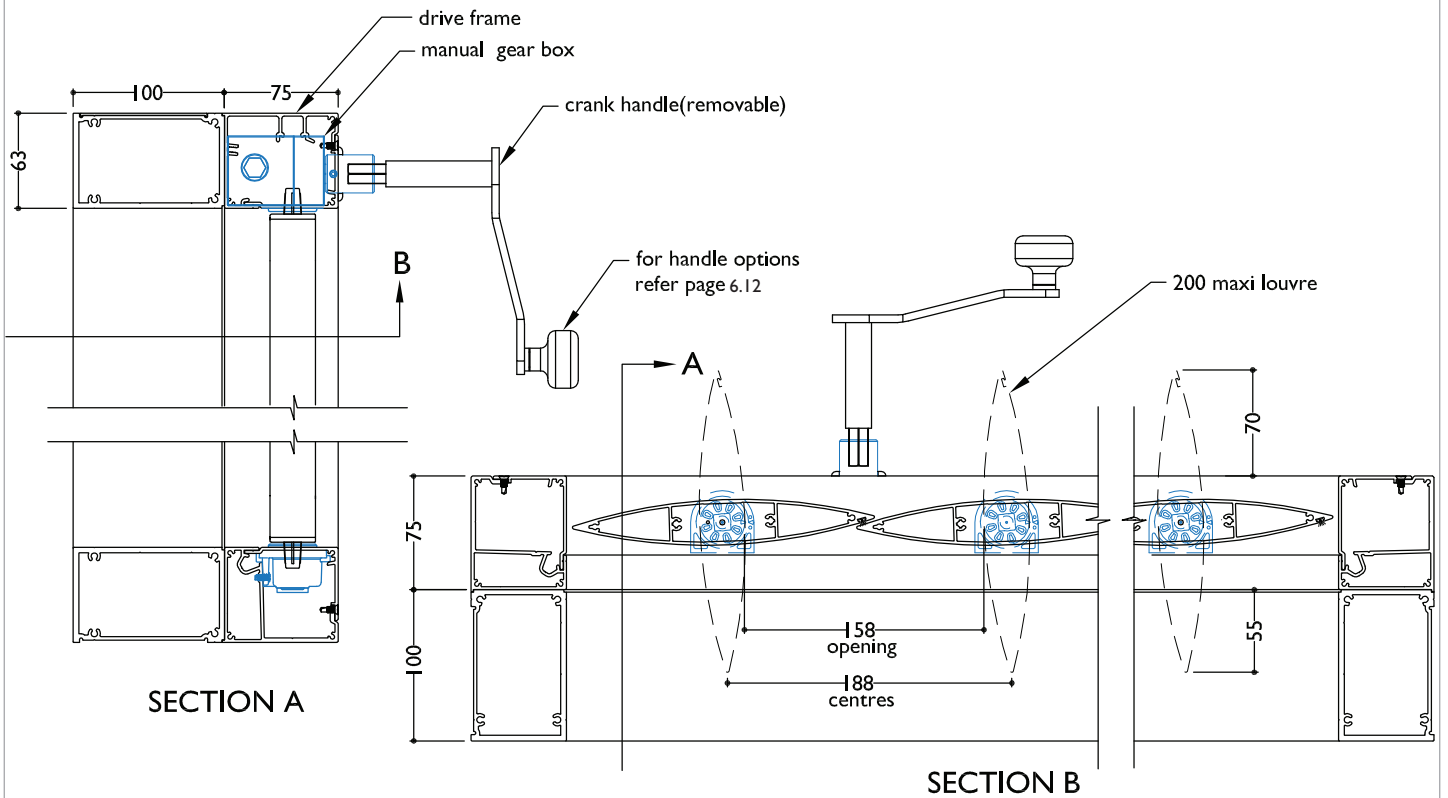


SECTION - MOTORISED 200MM MAXI LOUVRE SPIRAL PIVOT WITH TOP MOUNTED MOTOR

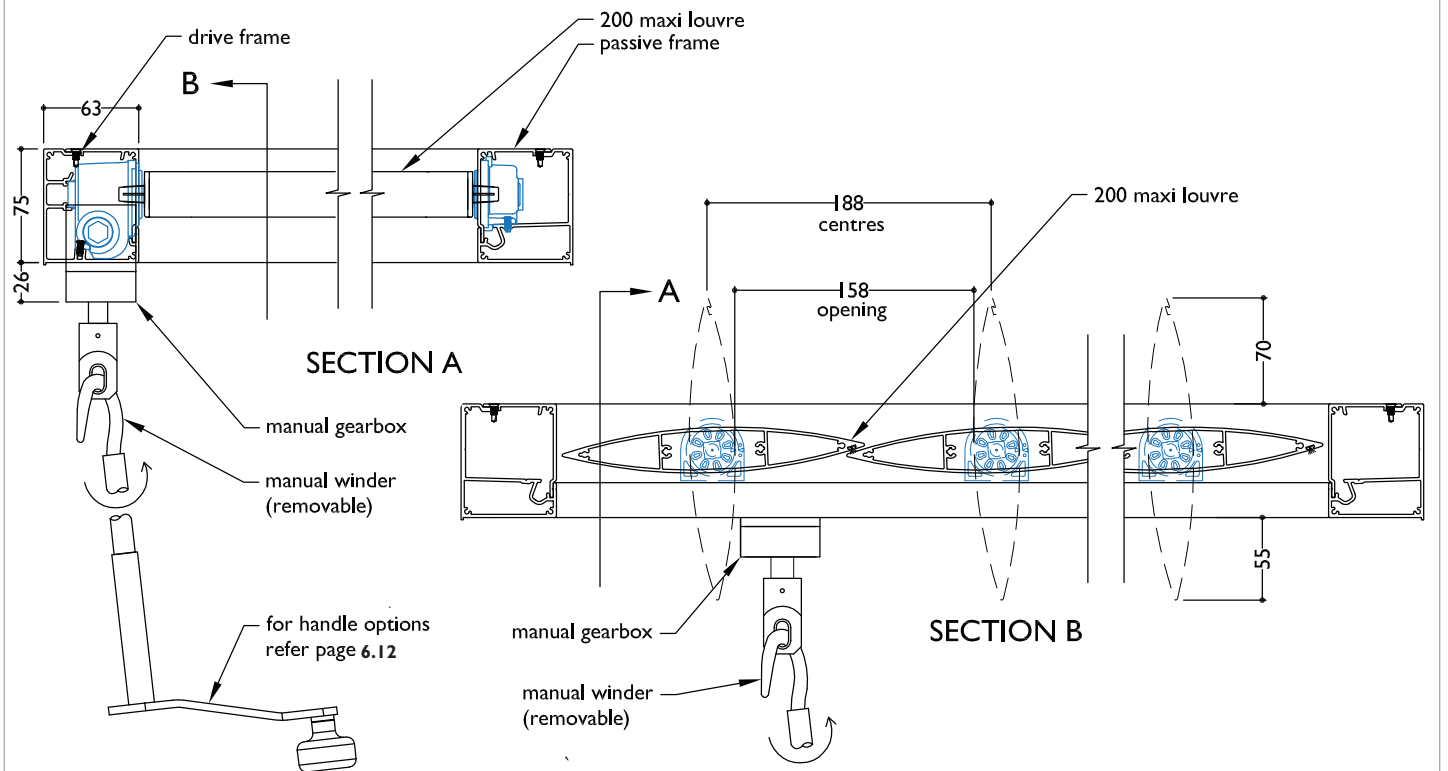


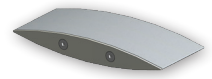
TYPICAL DETAIL : HAND OPERABLE 200MM SPIRAL PIVOT AIRFOIL LOUVRE

SECTION - MANUALLY OPERABLE 200 MAXI LOUVRE SPIRAL PIVOT ON SUPER ELAM STREET STRUCTURAL FRAME



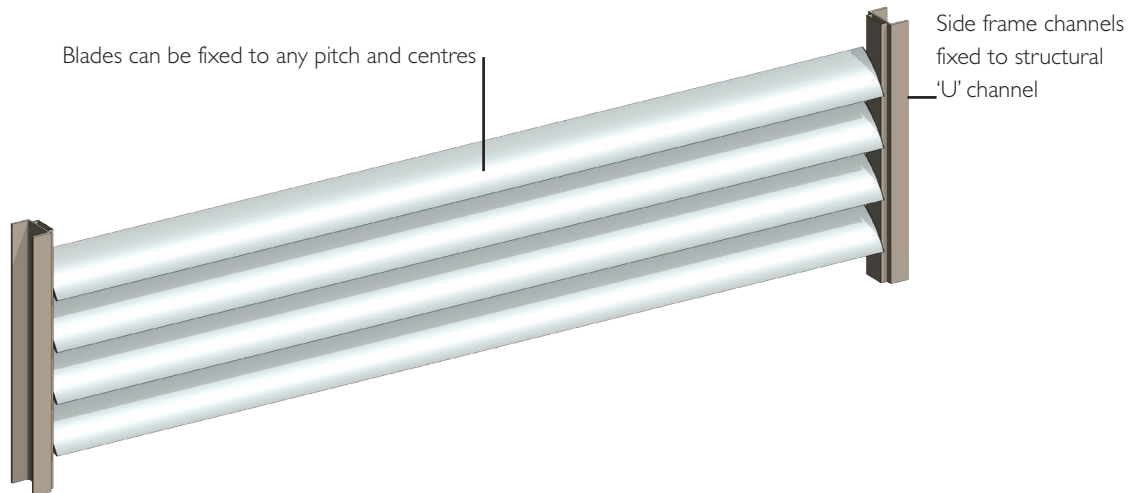
SECTION - MANUALLY OPERABLE 200 MAXI LOUVRE SPIRAL PIVOT





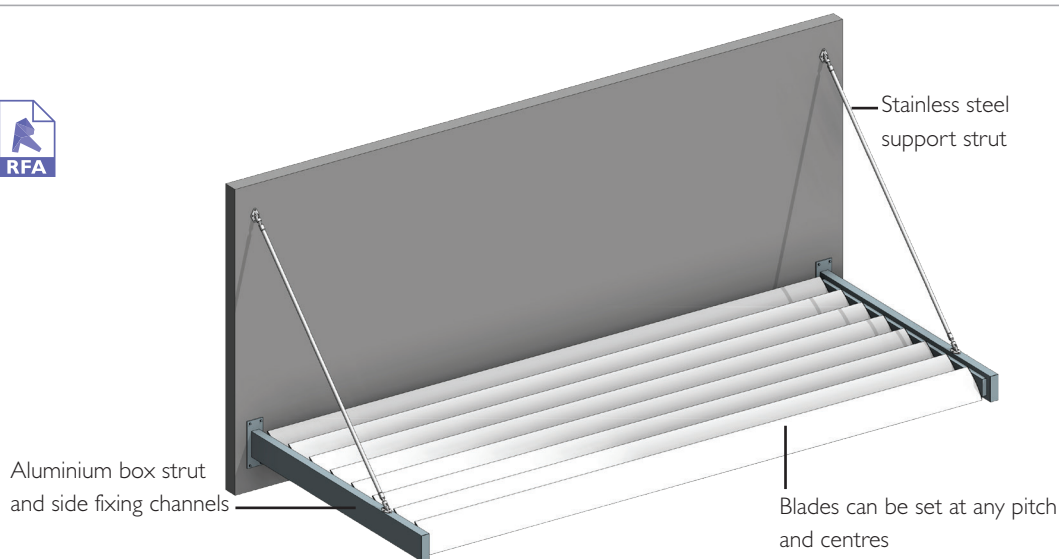
TECHNICAL DETAILS 200MM MAXI LOUVRE END FIXED

TYPICAL DETAIL 3D MODEL 200MM MAXI LOUVRE END FIXED VERTICAL PANEL



End fixed vertical panel

TYPICAL DETAIL 3D MODEL 200MM MAXI LOUVRE END FIXED OVERHEAD PANEL

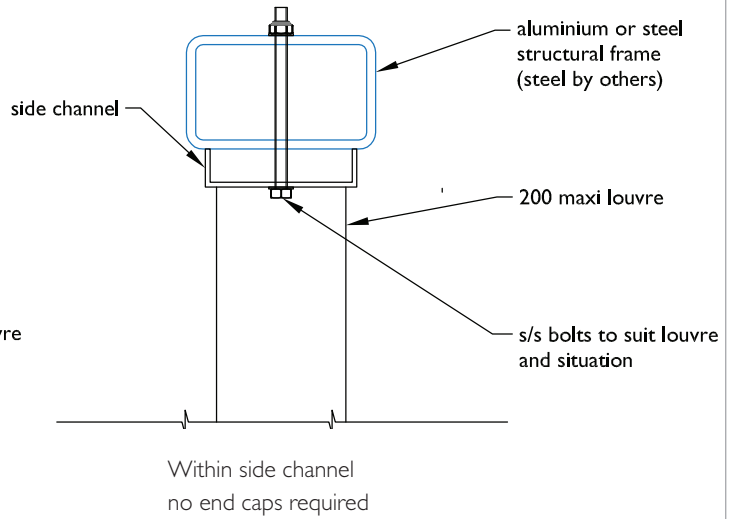
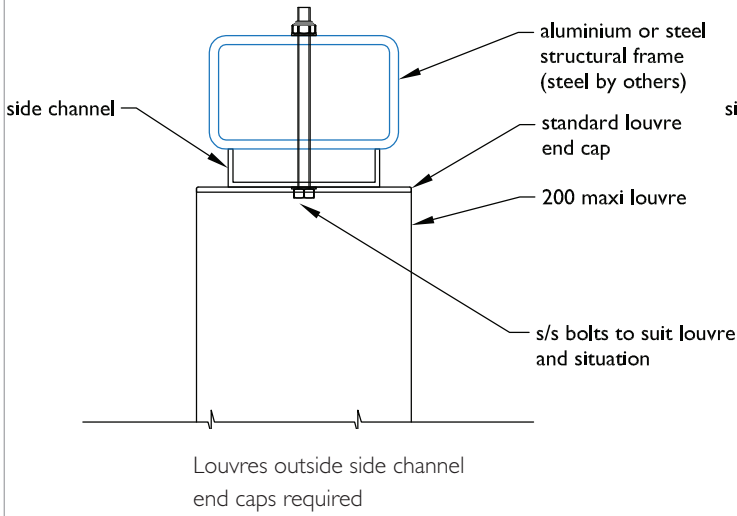


End fixed overhead panel

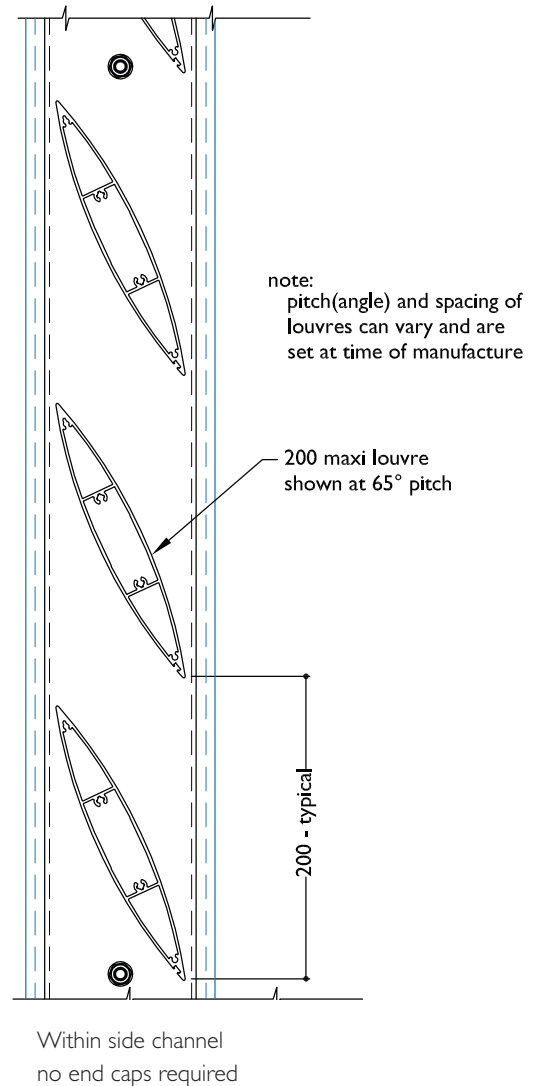
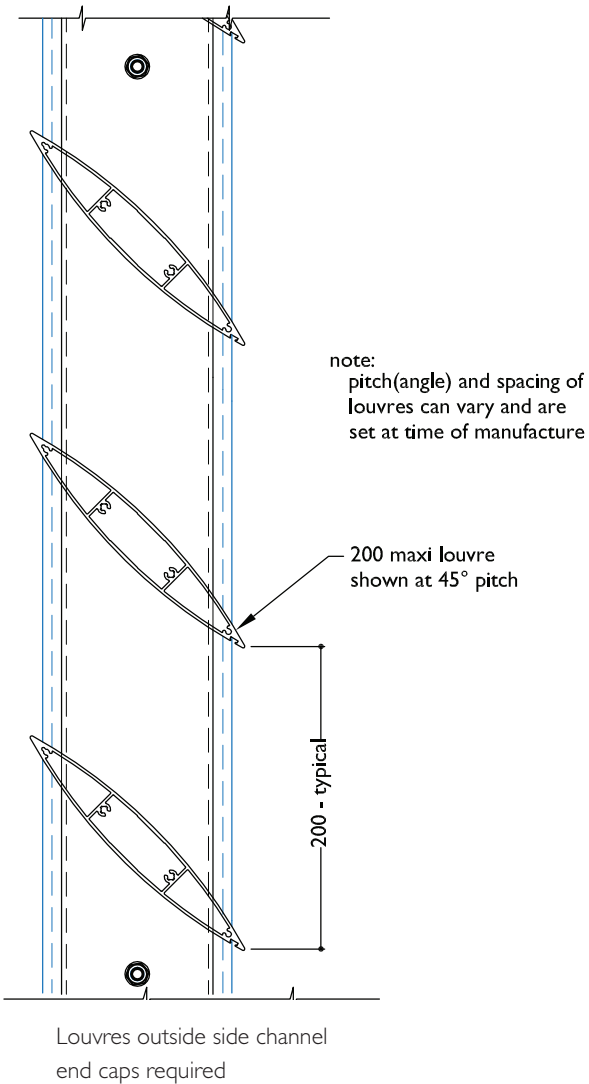


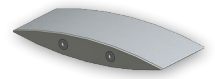
TYPICAL DETAIL : END FIXED 200MM MAXI LOUVRE PANELS

PLAN - END FIXED 200 MAXI LOUVRE



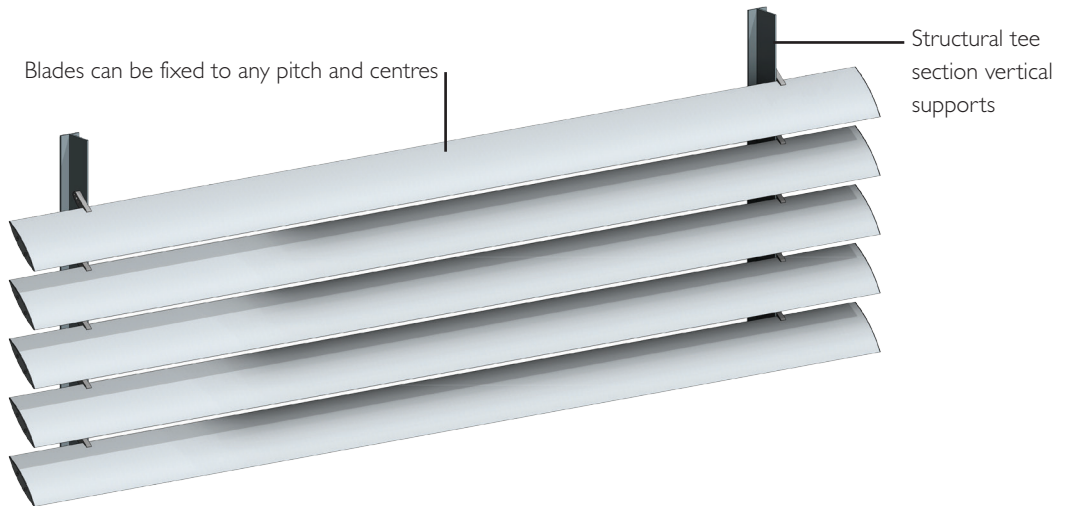
SECTION - END FIXED 200 MAXI LOUVRE





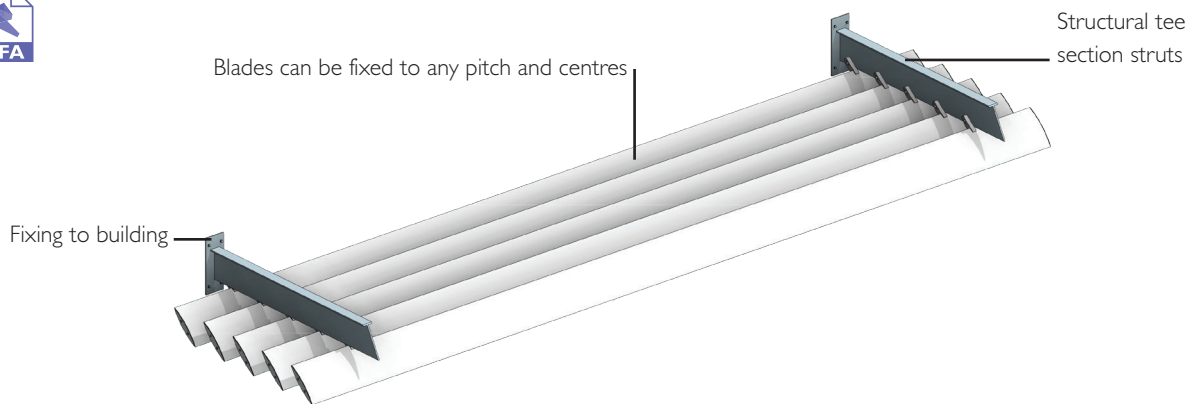
TECHNICAL DETAILS 200MM MAXI LOUVRE BRACKET FIXED

TYPICAL DETAIL 3D MODEL 200MM LOUVRE BRACKET FIXED VERTICAL PANEL



Bracket fixed vertical panel

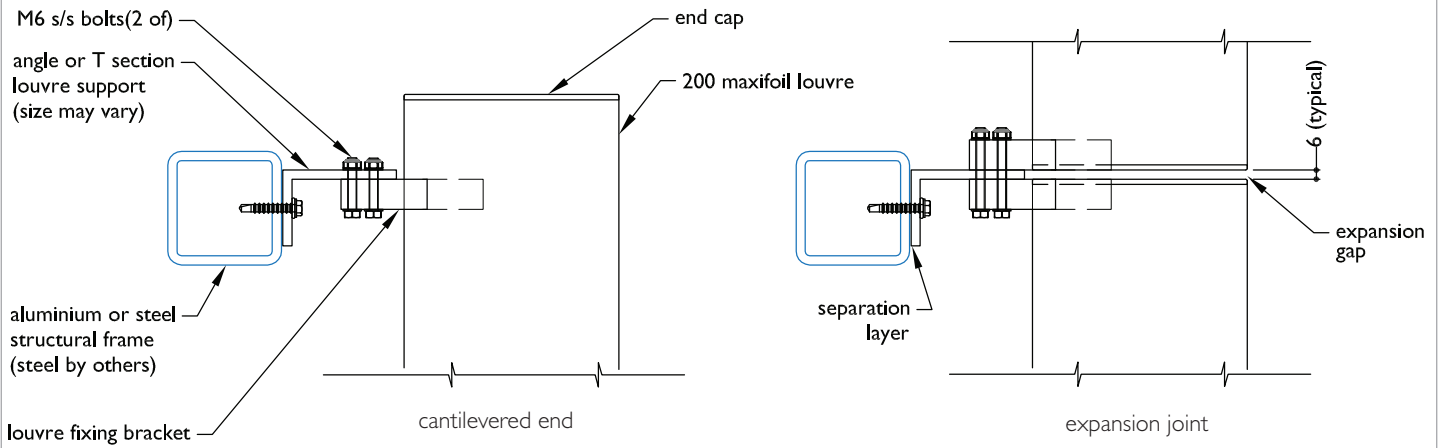
TYPICAL DETAIL 3D MODEL 200MM MAXI LOUVRE BRACKET FIXED OVERHEAD PANEL



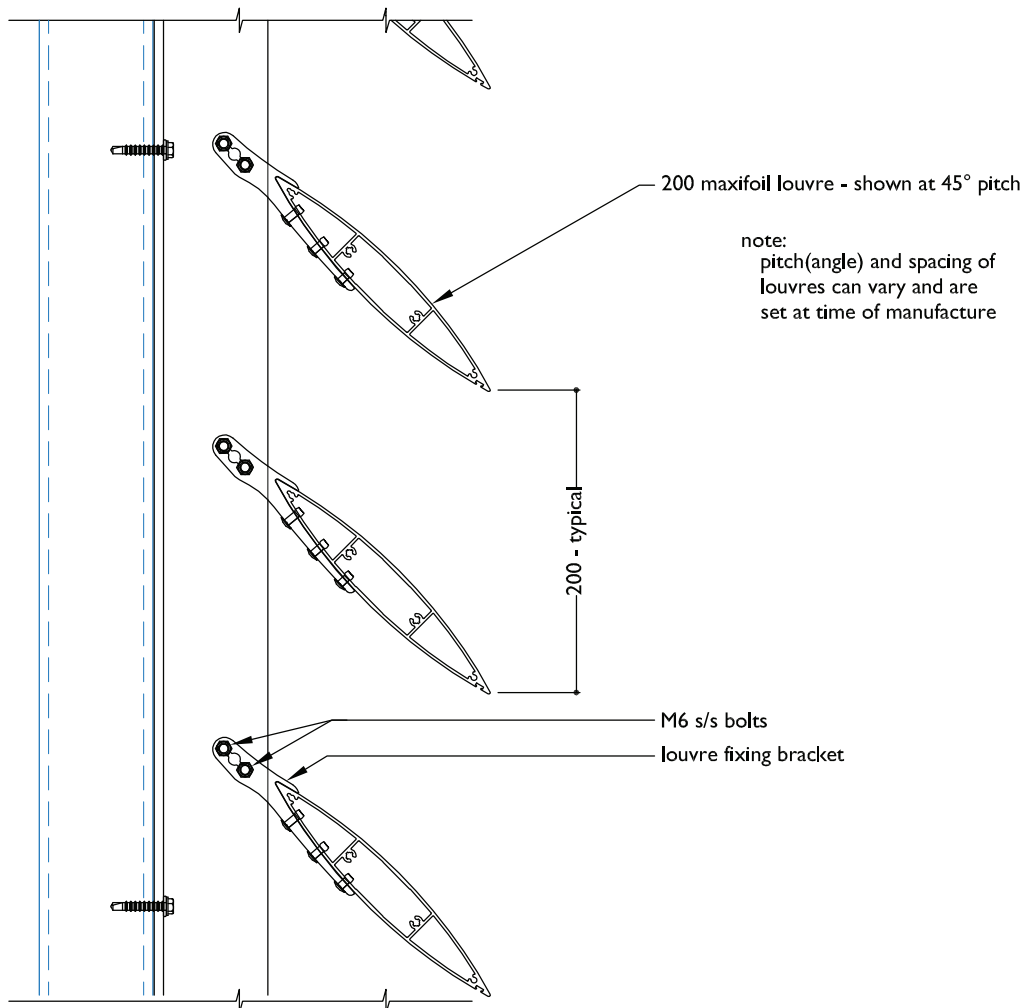
Bracket fixed overhead panel

TYPICAL DETAIL : BRACKET FIXED 200MM MAXI LOUVRE PANELS

PLAN - BRACKET FIXED 200MM MAXI LOUVRE

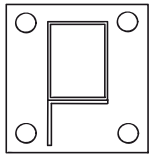


SECTION - BRACKET FIXED 200MM MAXIFOIL LOUVRE

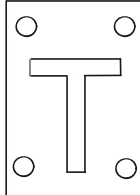


TYPICAL DETAIL : BRACKET FIXED OVERHEAD WALL STRUTS FOR 180MM AIRFOILS & 200MM MAXI LOUVRES SPANS AT A GLANCE

OVERHEAD EYEBROW DETAIL

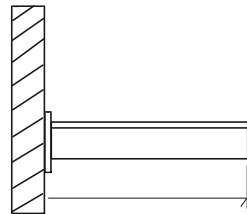


Base Plate:
150 x 100 x 6mm
Box Section:
75 x 50 x 2.5mm
Angle:
50 x 50 x 3mm



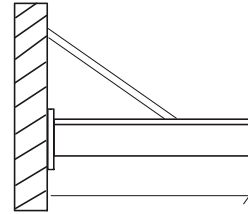
Base Plate: 120 x 100 x 6mm
'T' Section: 75 x 50 x 6mm

Free Span



LF	LF
500	500

Strut Support

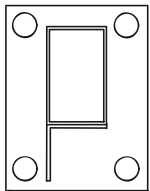


Strut Ø16mm
Stainless steel

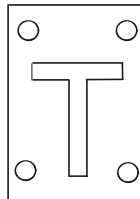
LS15	LS15
800	600

LS30	LS30
900	700

LS45	LS45
900	700

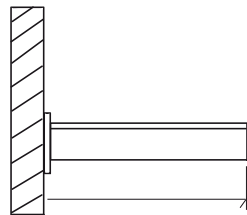


Base Plate:
225 x 100 x 6mm
Box Section:
100 x 50 x 3mm
Angle:
50 x 50 x 6mm



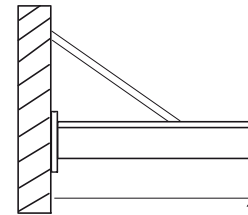
Base Plate: 170 x 100 x 6mm
'T' Section: 100 x 50 x 6mm

Free Span



LF	LF
700	600

Strut Support

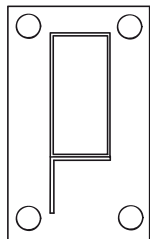


Strut Ø20mm
Stainless steel

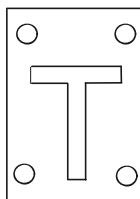
LS15	LS15
1100	900

LS30	LS30
1200	1000

LS45	LS45
1300	1000

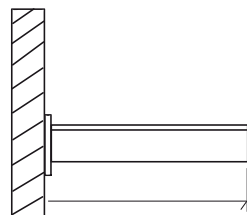


Base Plate:
275 x 100 x 6mm
Box Section:
150 x 50 x 3mm
Angle:
50 x 50 x 6mm



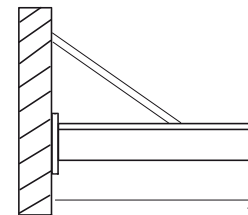
Base Plate: 170 x 100 x 6mm
'T' Section: 100 x 50 x 6mm

Free Span



LF	LF
1000	900

Strut Support



Strut Ø42mm
Stainless steel

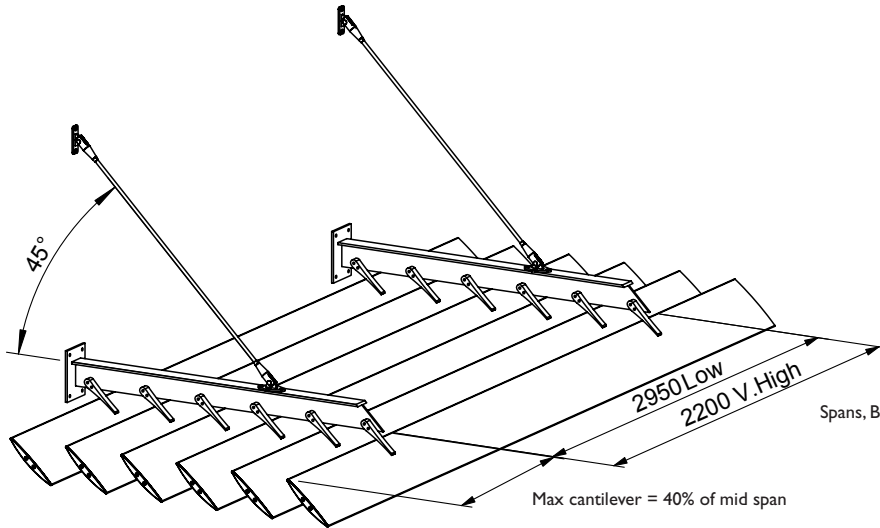
LS15	LS15
1400	1100

LS30	LS30
1600	1300

LS45	LS45
1700	1400

TYPICAL DETAIL : BRACKET FIXED OVERHEAD SUN LOUVRES 180MM AIRFOILS & 200MM MAXI LOUVRES SPANS AT A GLANCE

OVERHEAD EYEBROW LOUVRES

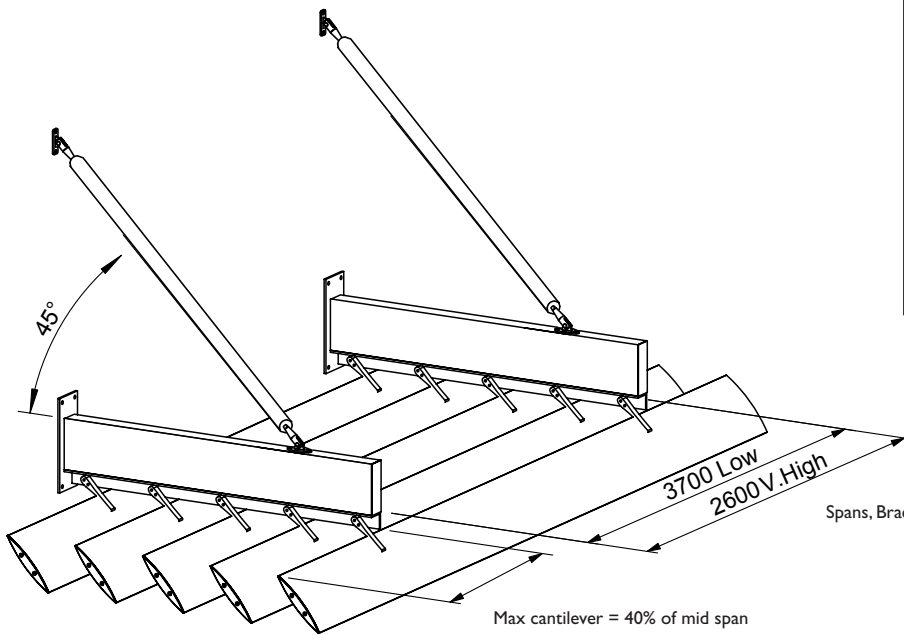


CALCULATIONS FOR BLADE SPANS SHOW RANGE FROM

Low Wind Zone | 15km/h, 32m/s to
Extra High Wind Zone | 198km/h, 55m/s
Refer Engineering Details, Section 11

Spans, Bracket Fixed 180mm Airfoil Louvre.

Ø20 SS Strut Support Example,
Strut at Optimum 45° angle.



Spans, Bracket Fixed 200mm Midi Louvre.

Ø42 SS Strut Support Example,
Strut at Optimum 45° angle.

KEY

- LF = Free span
- LS15 = Strut @ 15°
- LS30 = Strut @ 30°
- LS45 = Strut @ 45°

Plain Column:
Low - Med Wind Zone.
Up to 133Km/h - 37m/s

Shaded Column:
High - VHigh Wind Zone.
Up to 179Km/h - 50m/s