

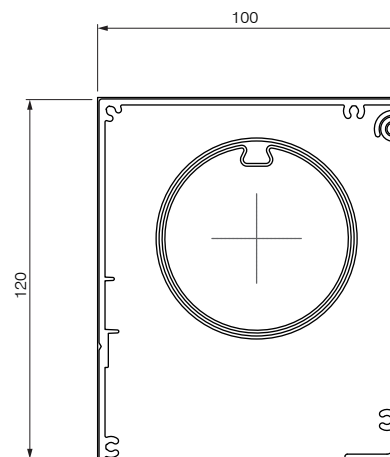
## SYSTEM SPECIFICATIONS

|                   |  |
|-------------------|--|
| Minimum width     | 800mm  |
| Maximum width     | 3200mm   |
| Maximum drop      | 3000mm (Not all fabrics are available to max drop) |
| Maximum area      | 9sqm   |
| Linkable          | No   |
| Headbox           | Yes  |
| Fabric deductions | 29mm per side                                      |
| Operation         | RTS motor (remote control) or WT motor (switch)    |

## TECHNICAL INFORMATION

|                      |   |
|----------------------|---|
| Headbox              | Two part extruded aluminium headbox 100x120mm |
| End plates           | Cast aluminium                                |
| Roller tube          | 65mm roller tube                              |
| Arms                 | 34x34mm spring loaded arms                    |
| Front rails          | 50x33mm extruded aluminium                    |
| Range                | 150° arm arc range                            |
| Installation options | Face or top                                   |

### Headbox details



## HMX 100 PIVOT

### EXTERNAL BLIND

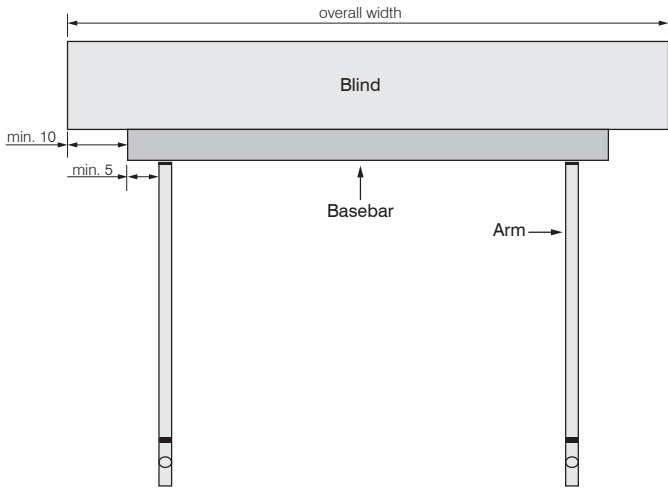
### 100x120mm HEADBOX



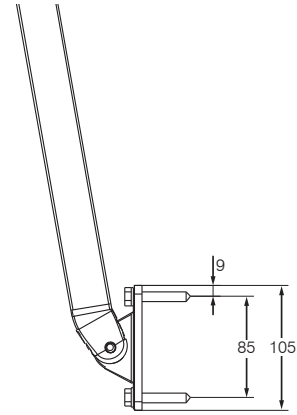
The Helioscreen **HMX 100 P** is an external pivot arm system built for durability and performance in the uniquely harsh Australian climate.

Designed and engineered in Europe, this is an uncompromising product of the highest quality, featuring a compact 100x120mm headbox.

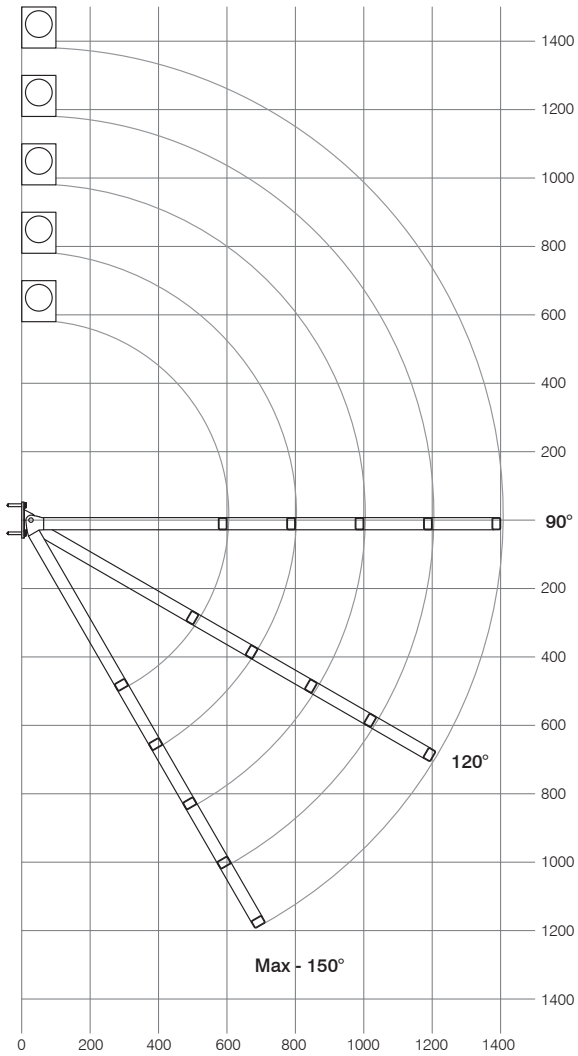
# Pivot arm detail



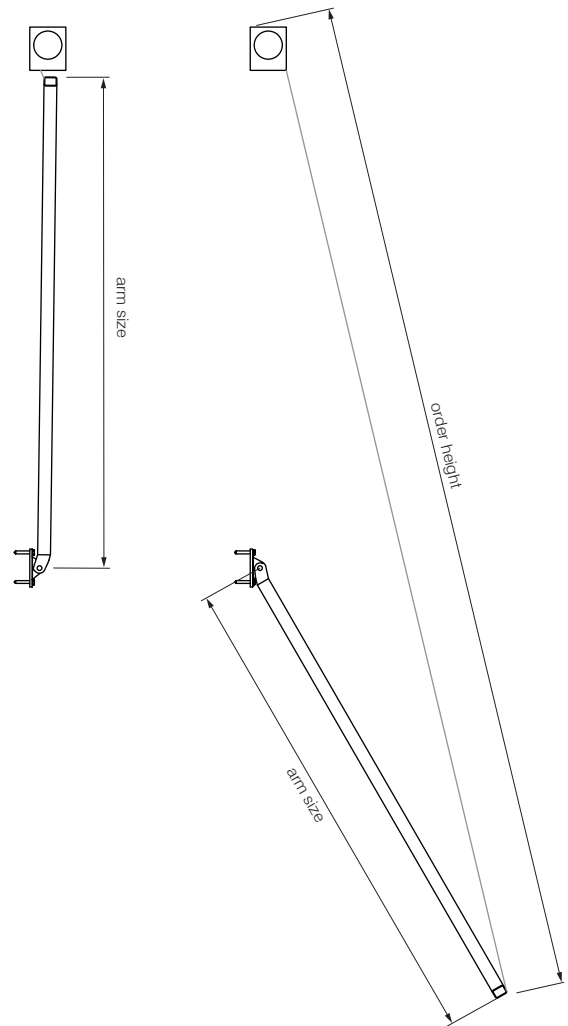
Front view



Arm mounting detail  
(Width = 25mm)



Pivot arm - arc chart  
Shows position of arms at various angles



Pivot arm charts

