

# SU10

## COMMERCIAL CENTRE POLE UMBRELLA



### Features at a glance

- Commercial grade aluminium frame structure
- Stainless steel hardware for longevity
- Durable high performance hub and fittings
- Telescopic mast enables umbrella to clear most furniture when closing
- Robust 82.5mm diameter mast with 3.4mm wall thickness
- Protection cover included
- Tough, commercial grade 50 x 25mm strut arm profile

### Accessories



**Rain Gutter**  
Adjoining square umbrellas can be connected with removable rain gutters to increase weatherproof area.

### Canopy

- 100% Sunbrella™ Marine solution-dyed fabric
- Waterproof Rating: >300mm water column
- Maintenance: All fabrics can be washed and replaced

- Weight: 315 g/m2
- Colourfastness: 7-8/8
- Shade Rating: UPF 50+

 **sunbrella®**

#### Stock Colours\*



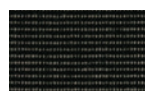
Black



Oyster White



Logo Red



Charcoal Tweed



Ocean Blue



Sunflower Yellow

\*other custom colours available on request.

## BEST-IN-CLASS WARRANTY

Relax easy knowing your outdoor umbrella purchase is protected by the industry's best warranty (conditions apply) and customer support. 3 year warranty applies for commercial applications.



**Fabric  
Warranty**

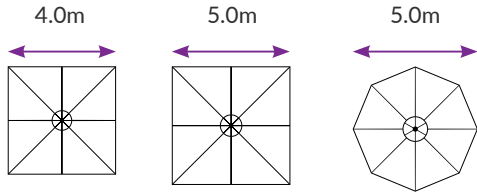


**Frame  
Warranty**

# SU10

## COMMERCIAL CENTRE POLE UMBRELLA

### Size & Configuration



### Mounting Options

**Surface Plate**  
For deck, patio and concrete mounting.

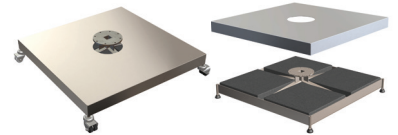


**In-Ground Anchor**  
For mounting with a concrete footing.



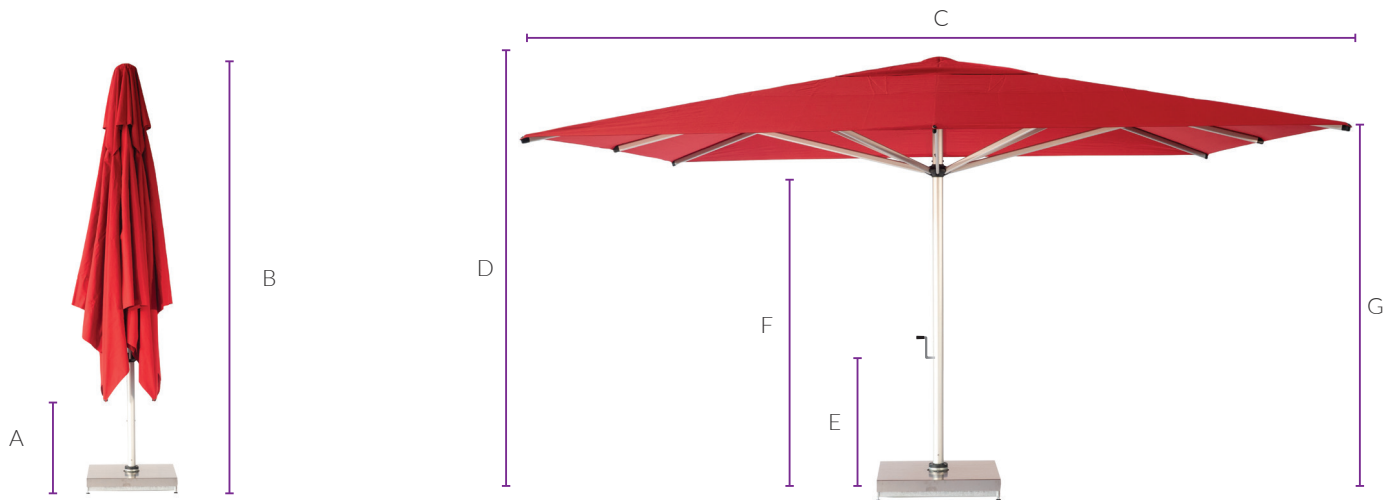
**Free-Standing Base + Aluminium Base Cover\***

For complete customised manoeuvrability.



\*Concrete Pavers are required for ballast (not supplied). Castor Wheels optional.

### Umbrella Dimensions



#### Diagram Legend

<b>A</b>	Closed Canopy Clearance*
<b>B</b>	Overall Height When Closed*
<b>C</b>	Canopy Width
<b>D</b>	Overall Height*
<b>E</b>	Winder Handle Height*
<b>F</b>	Hub Height*
<b>G</b>	Arms Height*

#### 4.0m

A	900mm
B	3740mm
C	4000mm
D	2870mm
E	840mm
F	2110mm
G	2270mm

#### 5.0m

A	730mm
B	4280mm
C	5000mm
D	3120mm
E	920mm
F	2260mm
G	2470mm

#### 5.0m

A	1040mm
B	3530mm
C	4600mm
D	2810mm
E	840mm
F	2150mm
G	2270mm

\*Free-Standing Base installations will add 177mm to the height and surface plates will add 19mm to the height. Adding Free-Standing Base wheels also will add a further 45-80mm. All sizings are approximate only and subject to change without notice.



SHADE  
CONSTRUCTION  
OUTDOOR

Instaco Pty Ltd as trustee for Instaco Group

ABN 21876208774 ACN 142762141

QBCC Licence no. 1203267

P 07 3277 7749

E sales@instaco.com.au

www.instaco.com.au

Office / Showroom

891 Beaudesert Road  
Archerfield  
QLD 4108



shadowspec  
umbrellas with distinction